

2015 / 2016
DiaDent Europe B.V.

serving 112 countries around the world ●●●



DiaDent's innovative and reliable items, services and processes are recognized as the world's brand, today DiaDent has been exporting them to over 900 dealers in 117 countries all around the globe.

Welcome to DiaDent

Passion for Innovation!

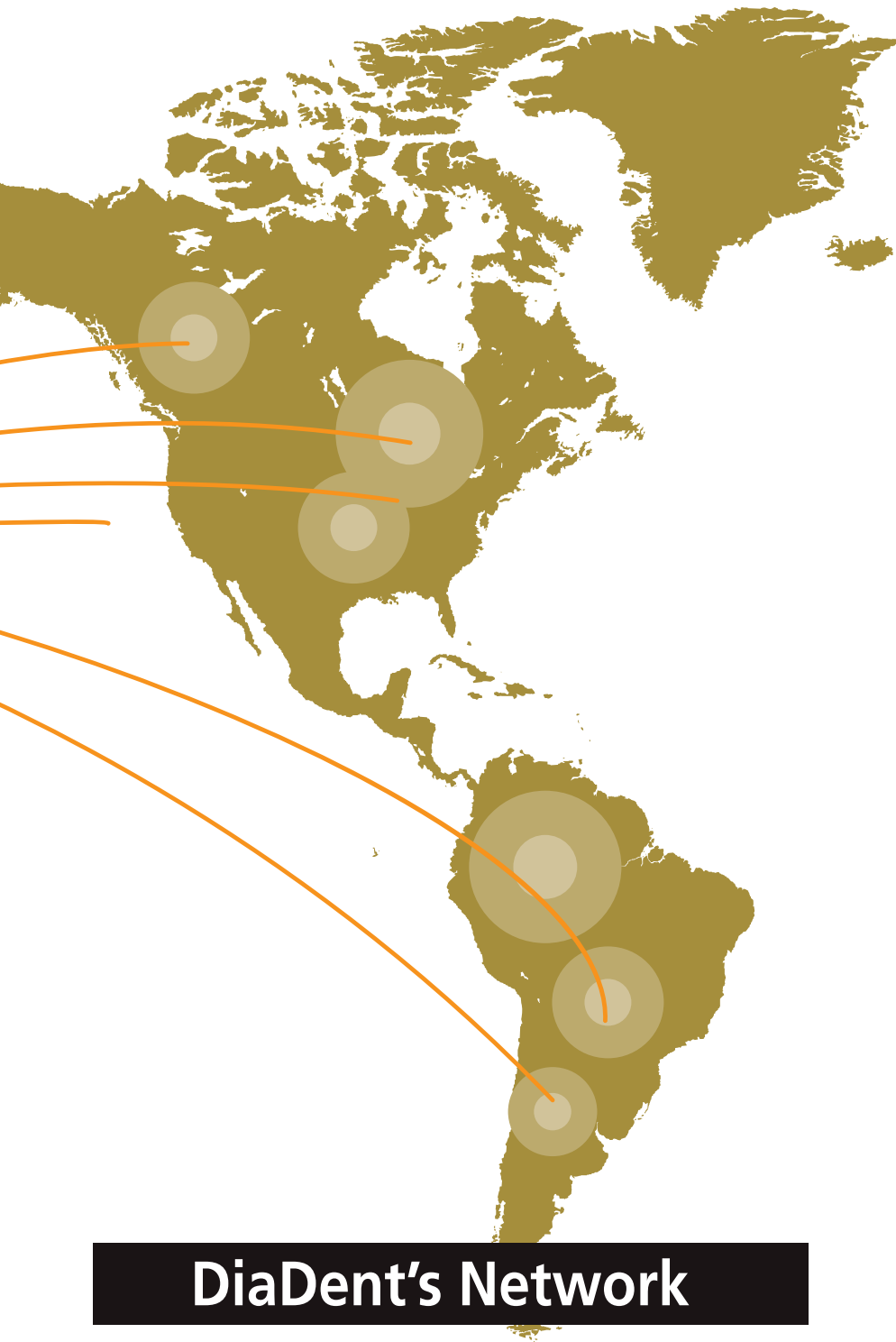
DiaDent is one of the leading Endodontic supply companies in the dental industry since 1985. For more than 29 years, DiaDent has been dedicated to making a better and high-quality dental products through our passion for the Innovation and leads the global market in high-advanced Endodontic items manufacturing and supplying.

From its inception as exporting Gutta Percha Points and Paper Points, DiaDent has grown to become a global leader, specializing in Endodontic devices and materials. DiaDent's innovative and reliable items, services and processes are recognized as the world's brand, today DiaDent has been exporting them to over 900 dealers in 117 countries all around the globe. DiaDent is taking the world in different systems with the highest standards so that DiaDent can more effectively contribute to create new markets and continue to make a responsible approach to the global business. All of DiaDent's products are inspected by a strict Quality Management System following the ISO 9001 & ISO 13485 standards. Always striving to be better and innovative, DiaDent puts in our utmost efforts to strengthen R&D part to develop brand-new dental devices and items. Our products from DiaDent's R&D part lead us to the global market in high-tech dental manufacturing. Through innovative, reliable products and services and a responsible approach to the business and collaboration with our partners and customers, DiaDent will continue to see every challenge as the world's recognized leaders in the dental industry.

Everyone here at DiaDent would like to thank you, our valued customers and business partners, for your continued support and loyalty. We wish everyone another happy and prosperous year ahead.

Sincerely,

DiaDent Group International



DiaDent's Network

DiaDent Group International (Korea & International)

No. 626, Yeonje-Ri, Gangoe-Myeon, Cheongwon-Gun, Chungcheong Buk Do, 363-951, South Korea
 Tel) 82-43-266-2315 Fax)82-43-262-8658
 E-mail: diadent@diadent.co.kr

DiaDent Group International Inc. (Canada & USA)

11-3871 North Fraser Way, Burnaby B.C, Canada V5J 5G6
 Tel)1-604-451-8851 Fax)1-604-451-8865
 E-mail: diadent@diadent.com

DiaDent Europe B.V (Europe)

Antennestraat 70, 1322 AS Almere, the Netherlands
 Tel)31-36-549-8607 Fax)31-36-536-7317
 E-mail: diadent@diadent europe.com

- | | |
|----------------------|-------------------|
| ALBANIA | MALAYSIA |
| ARMENIA | MALTA |
| ARGENTINA | MAURITIUS |
| AUSTRALIA | MEXICO |
| AUSTRIA | MOLDOVA |
| AZERBAIJAN | MONGOLIA |
| BAHRAIN | MONTENEGRO |
| BANGLADESH | MOROCCO |
| BELARUS | MYANMAR |
| BELGIUM | NETHERLANDS |
| BOLIVIA | NEW ZEALAND |
| BOSNIA & HERZEGOVINA | NEPAL |
| BRAZIL | NIGERIA |
| BRUNEI | NORWAY |
| BULGARIA | OMAN |
| CANADA | PAKISTAN |
| CAMBODIA | PALESTINE |
| COSTA RICA | PANAMA |
| CHILE | PAPUA NEW GUINEA |
| CHINA | PARAGUAY |
| COLOMBIA | PERU |
| CROATIA | PHILIPPINES |
| CYPRUS | POLAND |
| CZECH REPUBLIC | POLYNESIA |
| DENMARK | PORTUGAL |
| DOMINICAN REPUBLIC | QATAR |
| ECUADOR | REUNION ISLAND |
| EGYPT | ROMANIA |
| EL SALVADOR | RUSSIA |
| ESTONIA | SAUDI ARABIA |
| FINLAND | SENEGAL |
| FRANCE | SERBIA |
| GEORGIA | SINGAPORE |
| GERMANY | SLOVENIA |
| GHANA | SOUTH AFRICA |
| GREECE | SPAIN |
| GUATEMALA | SRI LANKA |
| HONG KONG | SUDAN |
| HUNGARY | SWEDEN |
| INDIA | SWITZERLAND |
| INDONESIA | SYRIA |
| IRAN | TAIWAN |
| IRAQ | THAILAND |
| IRELAND | TRINIDAD & TOBAGO |
| ISRAEL | TUNISIA |
| ITALY | TURKEY |
| JAMAICA | UAE |
| JAPAN | UGANDA |
| JORDAN | UNITED KINGDOM |
| KAZAKHSTAN | UKRAINE |
| KENYA | U.S.A |
| KOREA | URUGUAY |
| KOSOVO | UZBEKISTAN |
| KUWAIT | VENEZUELA |
| LATVIA | VIETNAM |
| LEBANON | YEMEN |
| LIBYA | |
| LIECHTENSTEIN | |
| LITHUANIA | |
| MACEDONIA | |
| MADAGASCAR | |

06

ROOT CANAL OBTURATION

- Millimeter Marked Gutta Percha Points
- Special Taper Gutta Percha Points
- Millimeter Marked Paper Points
- Special Taper Paper Points
- Temporary Filling Materials
- Diapaste (Premixed Calcium Hydroxide Paste with Barium Sulfate)
- DiaPen(Cordless Warm Vertical Compaction Device)
- DiaGun(Cordless Backfill Obturation Device)

16

COSMETIC & RESTORATIVES

- Restorative Micro Hybrid Composite Resin
- Flowable Restorative Composite Resin
- Light Cure Bonding Agent
- Etching Gel
- Light Cure Pit & Fissure Sealant
- Dual Cure Core Build-up Composite
- Self Curing Core Build-up Composite
- Cordless LED Curing Light
- EDTA Water Based Cleaner
- EDTA Root Canal Preparation Cream

27

ENDODONTIC INSTRUMENTS

- Apex Locator
- Nickel Titanium Rotary Files
- Flexible K-File
- Lentulo
- Probe File
- Gate Drills
- Peeso Reamers
- Nickel Titanium Hand Files
- Stainless Steel Hand Files
- Stainless Steel Spreader
- Stainless Steel Plugger
- Endo Condenser
- Endo Gauges
- Irrigation Syringes

37

MISCELLANEOUS ITEMS

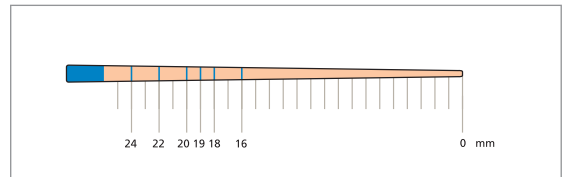
- Aluminum Endo Storage Boxes
- Protective Shields & Glasses
- Sterilizing Containers & Trays
- Prophy Brushes
- Prophy Cups
- Bur Blocks & Stands
- Instrument cassettes & Storage Trays
- Retractor & Endo Training Bloc
- Amalgam Well
- Cotton Roll Dispenser
- Nickel Titanium Arch Wires
- Glass Items
- Dental Wax

DiaDent's Millimeter Marked Gutta Percha Points & Paper Points

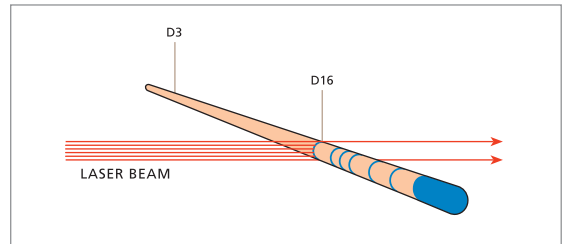
- All DiaDent Points are Hand Jig Rolled to exacting standards.
- They are uniformly tapered and unsurpassed for consistency in sizing.
- All Points are laser inspected to ensure the tightest tolerances surpassing ISO standards.

Millimeter Marked Gutta Percha Points

- Quick and easy method for depth measurements.
- Points with mm marking at 16mm, 18mm, 19mm, 20mm, 22mm and 24mm.
- Eliminates apex perforations which may lead to bleeding.
- Reaches the apex, completely seal the entire length of the canal.
- Save chair time with premeasured points.
- Most accurate depth measurements.

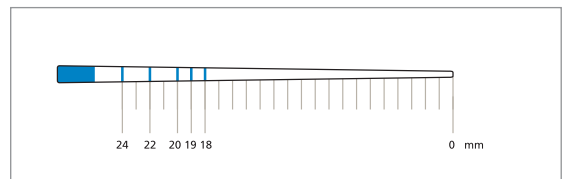


Millimeter Marked



Computerized Laser Inspection System

- Each point is inspected by the laser beam.
- Using a laser beam, each DiaDent ML.029 point is individually inspected for diameters at D3 and D16.
- ISO and ADA standard requires the use of 1/100mm incremental measurement units, DiaDent uses 1/1,000mm increments.

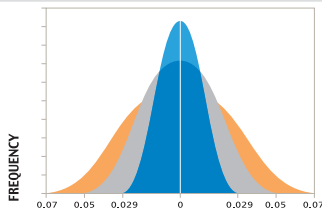


Millimeter Marked

Millimeter Marked Paper Points

- Quick and easy method for depth measurements.
- Points with mm marking at 18mm, 19mm, 20mm, 22mm and 24mm.
- Eliminates apex perforations which may lead to bleeding.
- Completely drying the entire length of the canal.
- Save chair time with premeasured points.
- Most accurate depth measurements.

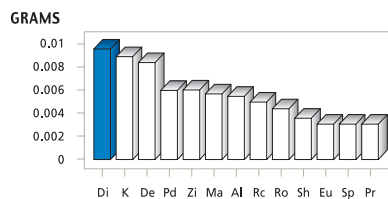
DiaDent Quality Assurance



DEVIATION FROM STANDARD (mm)

- DIADENT ML.029 SPECS
- ISO and ADA SPECS (#10 – #25 sizes)
- ISO and ADA SPECS (#30 – #140 sizes)

Comparative absorption of Paper Points, by Brand



JOSE PUMAROLA-SUNE, JOURNAL OF ENDODONTICS, VOL 24, NO.12, 796-798

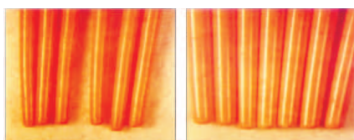
DIADENT PATENTS

- US Patent No. 6,004,133
- International Patents pending.
- European Patents No. 0964656
- United Kingdom Patents No. 0964656
- Deutsches Patents No. EP 0964656

Hand Jig Rolled Points vs Machine Rolled Points

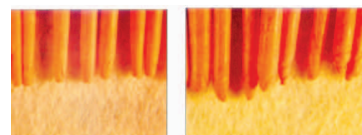
- DiaDent's method of hand rolling the points ensures the following:

DiaDent Hand Jig Rolled Gutta Percha Points



- Consistent, Uniform taper
- Smooth, Rounded Bullet shaped tips
- Readily conforms to shape of canal
- Greater likelihood of optimal apical seal

Machine Rolled Gutta Percha Points



- Inconsistent taper
- Uneven, Unpredictably shaped tips
- Overlapping of material of the tips
- Reduced likelihood of optimal apical seal

ML.029

MILLIMETER MARKED + LASER INSPECTED GUTTA PERCHA POINTS



ML.029

M - Millimeter Marked
 L - Laser Inspected
 .029 - Diameter Tolerance

Available Sizes

Size	P-63
XF	ML 102-601
FF	ML 102-602
MF	ML 102-603
F	ML 102-604
FM	ML 102-605
M	ML 102-606
ML	ML 102-607
L	ML 102-608
XL	ML 102-609
XF/M	ML 102-691

(Pkg. of 100)

Size vs Color Chart

15	45	90	XF	ML
20	50	100	FF	L
25	55	110	MF	XL
30	60	120	F	08
35	70	130	FM	10
40	80	140	M	

Size	P-43	P-63
#8	ML 101-401	ML 101-601
#10	ML 101-402	ML 101-602
#15	ML 101-403	ML 101-603
#20	ML 101-404	ML 101-604
#25	ML 101-405	ML 101-605
#30	ML 101-406	ML 101-606
#35	ML 101-407	ML 101-607
#40	ML 101-408	ML 101-608
#45	ML 101-409	ML 101-609
#50	ML 101-410	ML 101-610
#55	ML 101-411	ML 101-611
#60	ML 101-412	ML 101-612
#70	ML 101-413	ML 101-613
#80	ML 101-414	ML 101-614
#90	ML 101-415	ML 101-615
#100	ML 101-416	ML 101-616
#110	ML 101-417	ML 101-617
#120	ML 101-418	ML 101-618
#130	ML 101-419	ML 101-619
#140	ML 101-420	ML 101-620
#15/40	ML 101-491	ML 101-691
#45/80	ML 101-492	ML 101-692
#90/140	ML 101-493	ML 101-693

(Pkg. of 120)

Package Information

• P-43 Vial Package

Contains 6 light weight plastic square vials with color coded caps
 Box dimension :
 77 x 17 x 50mm(W x H x D)

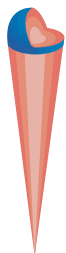
• P-63 Spill Proof Package

6 compartments with outer paper box
 Box dimension:
 73 x 17 x 49mm(W x H x D)

DIA-PROISO.04/.06 PLUS

MILLIMETER MARKED + LASER INSPECTED SPECIAL TAPER GUTTA PERCHA POINTS

- Millimeter Marked Special Taper Gutta Percha Points.
- Designed to be used to complement for Profile, Hero & K3 files.
- Available in taper .04 & .06



- 6% Dia-ProISO .06 Plus
- 4% Dia-ProISO .04 Plus
- 2% ML.029 / MMPP

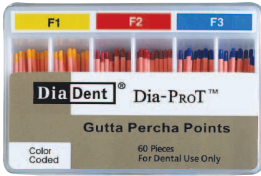


Available Sizes

Size	Dia-ProISO .04 Plus	Dia-ProISO .06 Plus
	P-63	P-63
#15	ML 158-603	ML 159-603
#20	ML 158-604	ML 159-604
#25	ML 158-605	ML 159-605
#30	ML 158-606	ML 159-606
#35	ML 158-607	ML 159-607
#40	ML 158-608	ML 159-608
#45	ML 158-609	ML 159-609
#50	ML 158-610	ML 159-610
#55	ML 158-611	ML 159-611
#60	ML 158-612	ML 159-612
#70	ML 158-613	ML 159-613
#80	ML 158-614	ML 159-614
#15/40	ML 158-691	ML 159-691
#45/80	ML 158-692	ML 159-692

(Pkg. of 60)

DIA-PROT



- Designed to be used to complement Protaper Files.
- Millimeter Marked Points
- One hand slide open lid

Size	ITEM No.
#F1	ML 150-S601
#F2	ML 150-S602
#F3	ML 150-S603
#F4	ML 150-S604
#F5	ML 150-S605
#F1/F3	ML 150-S691
#F4/F5	ML 150-S692
#F1/F5	ML 150-S693

(Pkg. of 60)

DIA-PRO R



- Designed to be used to complement RECIPROC® Files.
- Millimeter Marked Points

Size	ITEM No.
#25	ML164-605
#40	ML164-608
#50	ML164-610
#Asst(25/40/50)	ML164-691

(Pkg. of 60)

DIA-PRO W



- Designed to be used to complement Wave One Files.
- Millimeter Marked Points
- One hand slide open lid

Size	ITEM No.
#Small	ML165-601
#Primary	ML165-602
#Large	ML165-603
#Asst(Small/Primary/Large)	ML165-691

(Pkg. of 60)

DIA-PINK

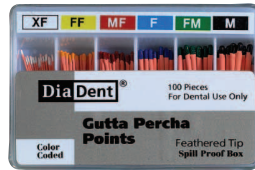


- Shorter than usual to suit slightly shorter canals
- available in 20 mm length
- Widely used in Europe
- One hand slide open lid

Size	ITEM No.
#XXF	103-901
#XF	103-902
#F	103-903
#M	103-904
#L	103-905
#XXF/M	103-991

(Pkg. of 100)

FEATHERED TIP



- Designed to be used as auxiliary points to the master cone technique
- Extra fine taper
- Hand Jig Rolled

Size	ITEM No.
#XF	126-601
#FF	126-602
#MF	126-603
#F	126-604
#FM	126-605
#M	126-606
#ML	126-607
#L	126-608
#XL	126-609
#XF/M	126-691

(Pkg. of 100)

DIA-GTP



- Designed to be used to complement Profile GT Greater Taper Files.
- Available in .06, .08, .10, .12, taper.

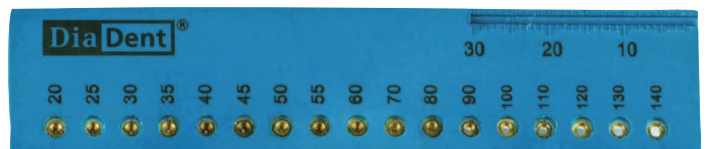
Size	ITEM No.
DIA-GTP .06 #20	112-601
DIA-GTP .08 #20	112-602
DIA-GTP .10 #20	112-603
DIA-GTP .12 #20	112-604
DIA-GTP .06/.12 #20	112-691

(Pkg. of 60)

DIA-GP GAUGE

• **ITEM #781-001**

- Designed to size a perfect master cone from any Gutta Percha Points.
- Drop it into the apical size and cut off with a blade.
- Autoclavable
- Dimensions: 92 x 3 x 20m/m(W x H x D)



MMPP

MILLIMETER MARKED PAPER POINTS



- MMPP is marked to provide preliminary guidance in measuring the root canal depth before proceeding clinically with the application of the Gutta Percha Points.
- These points are highly absorbent and color coded to identify ISO tip sizes.

Available Sizes

Size	P-33	P-63
XXF	MP 202-301	MP 202-601
XF	MP 202-302	MP 202-602
F	MP 202-303	MP 202-603
M	MP 202-304	MP 202-604
C	MP 202-305	MP 202-605
XC	MP 202-306	MP 202-606
XXF/XC	MP 202-391	MP 202-691

(Pkg. of 200)

Size	P-33	P-43	P-63
#8	MP 201-301	MP 201-401	MP 201-601
#10	MP 201-302	MP 201-402	MP 201-602
#15	MP 201-303	MP 201-403	MP 201-603
#20	MP 201-304	MP 201-404	MP 201-604
#25	MP 201-305	MP 201-405	MP 201-605
#30	MP 201-306	MP 201-406	MP 201-606
#35	MP 201-307	MP 201-407	MP 201-607
#40	MP 201-308	MP 201-408	MP 201-608
#45	MP 201-309	MP 201-409	MP 201-609
#50	MP 201-310	MP 201-410	MP 201-610
#55	MP 201-311	MP 201-411	MP 201-611
#60	MP 201-312	MP 201-412	MP 201-612
#70	MP 201-313	MP 201-413	MP 201-613
#80	MP 201-314	MP 201-414	MP 201-614
#90	MP 201-315	MP 201-415	MP 201-615
#100	MP 201-316	MP 201-416	MP 201-616
#110	MP 201-317	MP 201-417	MP 201-617
#120	MP 201-318	MP 201-418	MP 201-618
#130	MP 201-319	MP 201-419	MP 201-619
#140	MP 201-320	MP 201-420	MP 201-620
#15/40	MP 201-391	MP 201-491	MP 201-691
#45/80	MP 201-392	MP 201-492	MP 201-692
#90/140	MP 201-393	MP 201-493	MP 201-693

Package Information

• P-33 Cell Package

Points remain sterile until opened
Box dimension: 78 x 19 x 50mm(W x H x D)

• P-43 Vial Package

Contains 6 light weight plastic square vials with color coded caps
Box dimension: 77 x 17 x 50mm(W x H x D)

• P-63 Spill Proof Package

6 compartments plastic package
Box dimension: 73 x 17 x 49mm(W x H x D)

Size vs Color Chart

8	10		
15	45	90	XXF
20	50	100	XF
25	55	110	F
30	60	120	M
35	70	130	C
40	80	140	XC

Contents

Size	P-33	P-43	P-63
#08-80	200pcs	200pcs	200pcs
#90-140	200pcs	120pcs	120pcs

DIA-PROISO .04/.06 PLUS

MILLIMETER MARKED SPECIAL TAPER PAPER POINTS

- Millimeter marked Special Taper Absorbency Paper Points.
- Designed to be used for drying and cleaning the canals prepared with Profile, Hero & K3 files.
- Available in .04 & .06 taper.



Available Sizes

Size	Dia-Proiso .04 Plus	Dia-Proiso .06 Plus
	P-63	P-63
#15	MP 258-603	MP 259-603
#20	MP 258-604	MP 259-604
#25	MP 258-605	MP 259-605
#30	MP 258-606	MP 259-606
#35	MP 258-607	MP 259-607
#40	MP 258-608	MP 259-608
#45	MP 258-609	MP 259-609
#50	MP 258-610	MP 259-610
#55	MP 258-611	MP 259-611
#60	MP 258-612	MP 259-612
#70	MP 258-613	MP 259-613
#80	MP 258-614	MP 259-614
#15/40	MP 258-691	MP 259-691
#45/80	MP 258-692	MP 259-692

(Pkg. of 100)

DIA-PROISO .04/.06 PLUS IN THE CELL PACKAGE



- Points remain sterile until opened

Cell pkg	Dia-Proiso .04 Plus	Dia-Proiso .06 Plus
#15	MP258-703	MP259-703
#20	MP258-704	MP259-704
#25	MP258-705	MP259-705
#30	MP258-706	MP259-706
#35	MP258-707	MP259-707
#40	MP258-708	MP259-708
#15/40	MP258-791	MP259-791

(Pkg. of 120)

DIA-PROT

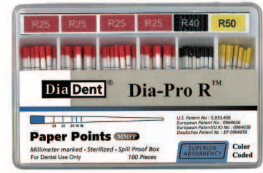


- Designed to be used to complement Protaper Files.
- Millimeter Marked Points
- One hand slide open lid

Size	ITEM No.
#F1	MP250-S601
#F2	MP250-S602
#F3	MP250-S603
#F4	MP250-S604
#F5	MP250-S605
#F1/F3	MP250-S691
#F4/F5	MP250-S692
#F1/F5	MP250-S693

(Pkg. of 100)

DIA-PRO R

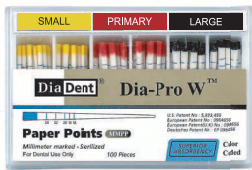


- Designed to be used to complement RECIPROC® Files.
- Millimeter Marked Points

Size	ITEM No.
#25	MP264-605
#40	MP264-608
#50	MP264-610
#Asst(25/40/50)	MP264-691

(Pkg. of 100)

DIA-PRO W

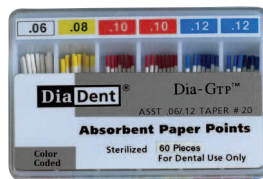


- Designed to be used to complement Wave One Files.
- Millimeter Marked Points
- One hand slide open lid

Size	ITEM No.
#Small	MP265-601
#Primary	MP265-602
#Large	MP265-603
#Asst(Small/Primary/Large)	MP265-691

(Pkg. of 100)

DIA-GTP

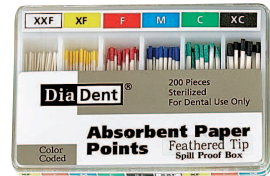


- Designed to be used to complement Profile GT Greater Taper Files
- Available in .06, .08, .10, .12, taper.

Size	ITEM No.
DIA-GTP .06#20 (100/box)	208-601
DIA-GTP .08#20 (100/box)	208-602
DIA-GTP .10#20 (60/box)	208-603
DIA-GTP .12#20 (60/box)	208-604
DIA-GTP .06/.12#20 (60/box)	208-691

(Pkg. of 60)

FEATHERED TIP



- Designed to be used as auxiliary points to the master cone technique.
- Extra fine taper.
- Hand Jig Rolled.

Size	ITEM No.
#XXF	204-601
#XF	204-602
#F	204-603
#M	204-604
#C	204-605
#XC	204-606
#XXF/XC	204-691

(Pkg. of 200)

PACKAGE INFORMATION

• P-33 Cell Package

Points remain sterile until opened
Box dimension: 78 x 19 x 50mm
(W x H x D)



• P-63 Spill Proof Package

6 compartments with outer paper box.
Box dimension: 73 x 17 x 49mm
(W x H x D)



• P-43 Vial Package

Contains 6 light weight plastic square vials with color coded caps
Box dimension: 77 x 17 x 50mm
(W x H x D)



• SP-60 Slide Package

One hand slide open lid
Cellophane shrink-wrapped package
Box dimension: 70 x 13 x 45 mm
(W x H x D)



ENDO ORGANIZERS

- Packed in plastic Endo Organizer package with 12 compartments.
- The ideal way to organize Endodontic Points.
- DiaDent Endo Organizers can be ordered empty or a combination of Gutta Percha and Paper Points



mmGP1



mmPP2



mmCOMBI1



mmGP2(6%)



mmPP1(4%)



mmCOMBI1(4%)

ML.029 & MMPP

- Millimeter marked Gutta Percha and Paper Points.
- All DiaDent points are Hand Jig Rolled.

Size	Description	ITEM No.
mmEG1	Empty box	EMG 301-100
mmGP1	240points per box(size15/40)	EMG 301-101
mmGP2	240points per box(size45/80)	EMG 301-102
mmGP3	240points per box(size15/80)	EMG 301-103
mmPP1	400points per box(size15/40)	EMP 301-201
mmPP2	400points per box(size45/80)	EMP 301-202
mmPP3	400points per box(size15/80)	EMP 301-203
mmCOMBI1	GP 120points/PP 200points per box(size15/40)	EMC 301-301
mmCOMBI2	GP 120points/PP 200points per box(size45/80)	EMC 301-302
mmCOMBI3	GP 240points/PP 400points per box(size15/40)	EMC 301-303
mmCOMBI4	GP 240points/PP 400points per box(size45/80)	EMC 301-304

.04 & .06 Tapered ML.029 & MMPP

- Millimeter marked special taper Gutta Percha and Paper Points.
- Designed to be used to complement for **Profile, Hero & K3 files**.

Size	Description	ITEM No.
mmGP 1(4%)	240points GP DIA-PROISO-.04 PLUS(size 15/80)	MSG 301-101
mmGP 2(6%)	240points GP DIA-PROISO-.06 PLUS(size 15/80)	MSG 301-102
mmGP 3(4% & 6%)	240points GP DIA-PROISO-.04 & .06 PLUS (size 15/40)	MSG 301-103
mmPP 1(4%)	240points PP DIA-PROISO-.04 PLUS(size 15/80)	MSP 301-201
mmPP 2(6%)	240points PP DIA-PROISO-.06 PLUS(size 15/80)	MSP 301-202
mmPP 3(4% & 6%)	240points PP DIA-PROISO-.04 & .06 PLUS (size 15/40)	MSP 301-203
mmCOMBI 1 (4%)	240points GP & PP DIA-PROISO-.04 PLUS(size15/40)	MSC 301-301
mmCOMBI 2 (6%)	240points GP & PP DIA-PROISO-.06 PLUS(size15/40)	MSC 301-302

TEMPORARY STOPPING

- For temporary filling and thermal diagnostics tool.
- A warmed stick with pinpoint thermal sensitivity.
- High quality Gutta Percha.
- Easy to heat.
- Available in White



White	
120g	180-201

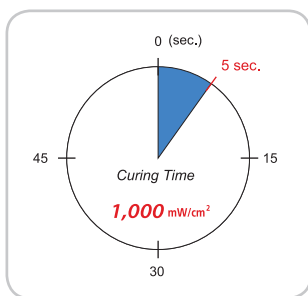
DIATEMP™ A VISIBLE, LIGHT CURED TEMPORARY FILLING MATERIAL

Light Cured material with nano-sized silver for temporary/intermediate restorations of inlay and onlay, for relining prefabricated crowns and bridges.



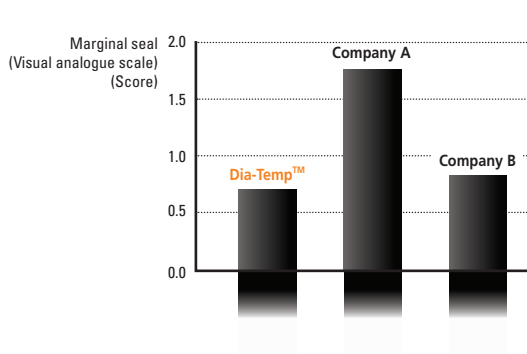
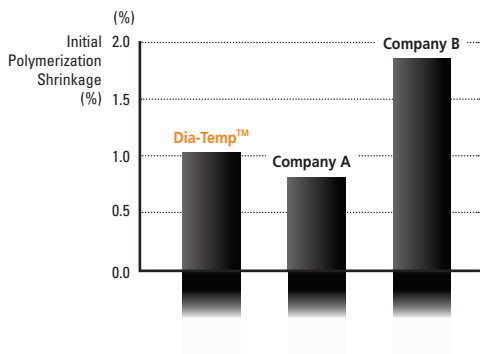
Benefits

- Quick and simple removal: Can be removed in one piece
- High wear resistance, mechanical strength
- Ensures a fast set
- Excellent adhesion
- Easy application: Convenient syringe dispensed material does not required mixing
- Blue Dia-Temp is ideal for Posterior teeth
- Yellow Dia-Temp is ideal for Anterior teeth



Packages

- 3 syringes of 3g
- ITEM #2003-1101 Blue
- ITEM #2003-1201 Yellow



E-TEMP

HYDRAULIC TEMPORARY RESTORATIVE MATERIAL

NEW

- Temporary filling material for standard cavities and post-endodontic treatments.



Benefits

- Temporary Filling Material for Standard Cavities.
- Easily setting initiated by saliva.
- Excellent adaptability.
- Easy to remove.
- Adheres to dentine, expands slightly during the setting and hardens rapidly to ensure hermetical seal.
- Improved the mechanical properties for the quick temporary filling.

Directions

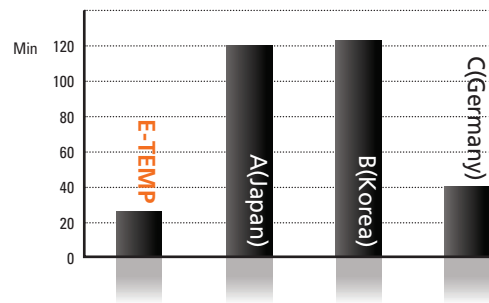
- Prepare and dry the cavity with a small cotton pellet.
- Transfer E-TEMP to the cavity using a suitable instrument and form the contour. In the case of occlusal Class I, the patient bites down on the surface, and then form the contour.
- After the patient close the mouth, E-TEMP will harden within 25 minutes. Recommend the patient to avoid the strong pressure or abrasion for at least 2 hours.

Package

- 30g ITEM #2004-1001

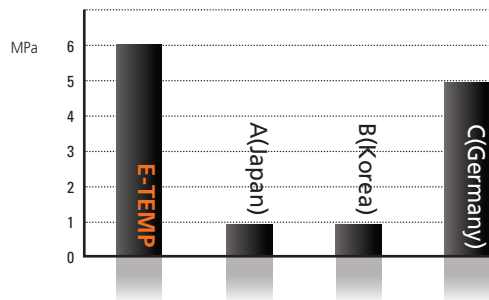


Setting Time



- This test is measured as ISO 3107 regulations after the same setting time in the laboratory(R&D DiaDent 2013)

Compressive Strength



- This test is measured as the same condition at 37 degrees and 95% humidity in the laboratory(R&D DiaDent 2013)

DiaCem™ TempNE

NON EUGENOL TEMPORARY CEMENT

NEW

- Non-Eugenol Temporary cement for trial cementing restorations or temporary crowns and bridges



Features

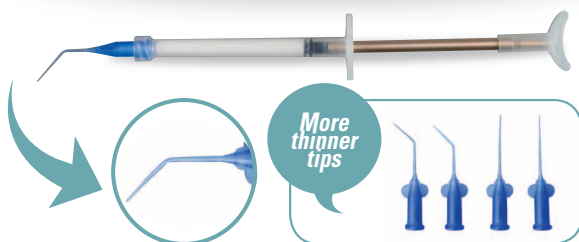
- Easy and precise direct dosing
- No hand mixing and Stable mix of base and catalyst viscosity with the automix tip
- High bond strength to prevent leakage and sensitivity to cold and heat
- Easy removal for the patient comfort
- Low film thickness with high compressive and flexural strength
- Fast working time(3 min) and setting time(5 min in the mouth)

Packages

- ITEM#2004-2101 2 Syringes of 10g, 10 Automix tips
- ITEM#2001-6112 20 Automix tips

DIAPASTE™

CALCIUM HYDROXIDE PASTE WITH BARIUM SULFATE



Characteristics

- Premixed Calcium Hydroxide + Barium Sulfate paste for root canal treatment.
- Temporary root filling.
- Root canal filling for primary teeth.
- Use after pulp extirpation treatment.
- Filling on the pulpotomy.
- Temporary Pulp Capping.

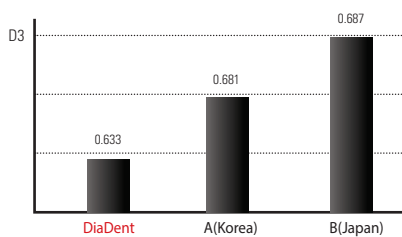
Benefits

- Water Soluble: Easy to clean and remove, reduce operative time
- Easy and quick access
- Radiopaque
- Antibacterial

Packages

- ITEM #1001- 402 Regular Kit
- 2g of paste and 10 disposable tips with cap
- ITEM #1001- 315 Blue Disposable Syringe Tips
- 20 disposable tips in a blister package

Tip Specification



DIAPEN

CORDLESS WARM VERTICAL COMPACTION DEVICE

- DiaDent's Cordless Warm Vertical Compaction Device
- DiaPen has the optimum functionality and quality and is fully proven effective for the downpack obturation system.
- DiaPen has the following techniques and features:

Techniques

- **Softening** the root canal filling material(Gutta Percha Points) during the root canal treatment
- **Spreading** the root canal filling material(Gutta Percha Points) laterally and vertically
- **Cutting** the root canal filling material(Gutta Percha Points)
- **Compacting** the root canal filling material(Gutta Percha Points) using with the heat

Features

- Excellent result with warm and vertical compaction for all canals including lateral canals. DiaPen offers reliable results with tightly sealed root canals
- Cordless, Ergonomic and Lightweight design make it easy for handling, cleaning and storage
- Quick heating tip reaches high level of temperature within one (1) second to save treatment time
- Color-coded pen tips are available in various sizes (#XF, F, FM, M, ML) for easy identification
- Three temperature settings (High, Medium, Low)
- Simple operation

Package

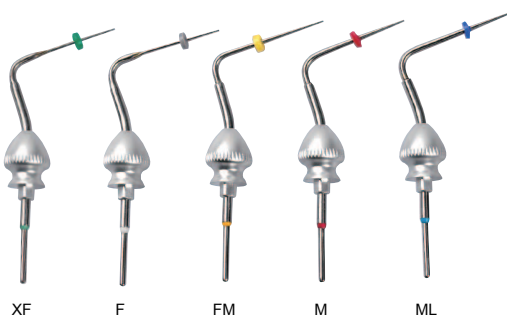
- **ITEM #4002-1001 Regular Kit**
- DiaPen Handpiece & Charger
- Accessories: Silicone Cover(2ea), Power Adapter & Cord, Pen Tips #F (included Endo stops, 1ea), #FM(included Endo Stops, 1ea)

Accessories

- **ITEM #4002-1010 Handpiece**
- **ITEM #4002-1020 Charger**
- **ITEM #4002-1030 Power Adapter & Cord**
- **ITEM #4002-1040 Silicone Cover(2ea)**
- **ITEM #4002-1050 Battery**
- **ITEM #4002-1060 Pen Tip #XF(1ea)**
- **ITEM #4002-1061 Pen Tip #F(1ea)**
- **ITEM #4002-1062 Pen Tip #FM(1ea)**
- **ITEM #4002-1063 Pen Tip #M(1ea)**
- **ITEM #4002-1064 Pen Tip #ML(1ea)**
- **ITEM #4002-1065 Pen Tips #F/FM(1ea each)**



Color-coded pen tips: #XF, F, FM, M, ML



DIAGUN

CORDLESS BACKFILL OBTURATION DEVICE

- DiaGun is Cordless Obturation System Device, DiaGun offers fast and easy obturation delivery. With this effective obturation system and technique, optimum results are achieved. The high-performance DiaGun device has the following features:



Features

- Cordless and Compact Design allows complete freedom of movement
- Reliable Gutta Percha Filling to the desired level without delay
- Fast and continuous flow of filling tightly seals the canal
- Variable Temperature Settings (160°C, 180°C, 200°C): precise control of obturation flow
- Quick Heating System: temperature reaches 200°C within 25 seconds
- Ergonomically designed 360° Swivel Needle offers improved access
- Thinner needle can easily fill the narrow root canal

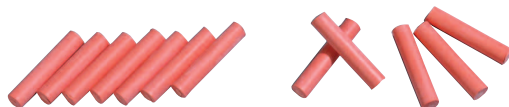
Package

- **ITEM #4001-1001 Regular Kit**
- DiaGun Handpiece & Charger
- Accessories: Safety Cap(2ea), Plunger, Plunger O-Rings(4ea), Power Adapter & Cord, Disposable Gun Tips(23G,4ea), Multipurpose wrench, Scrubbing Brush, Battery, Gutta Percha Obturator(100ea)

Accessories

- **ITEM #4001-1010 Handpiece**
- **ITEM #4001-1020 Charger**
- **ITEM #4001-1030 Safety Cap(2ea)**
- **ITEM #4001-1040 Plunger**
- **ITEM #4001-1050 Plunger O-Rings(4ea)**
- **ITEM #4001-1060 Power Adapter & Cord**
- **ITEM #4001-1070 Disposable Gun Tips(23G,4ea)**
- **ITEM #4001-1071 Disposable Gun Tips(25G,4ea)**
- **ITEM #4001-1080 Multipurpose Wrench**
- **ITEM #4001-1090 Scrubbing Brush**
- **ITEM #4001-1100 Battery**
- **ITEM #181-101 Gutta Percha Obturator(Medium type, 100ea)**

GUTTA PERCHA OBTURATOR



- **ITEM #181-100 Soft type**
- **ITEM #181-101 Medium type**
- **ITEM #181-102 Hard type**

- Designed to use with DiaGun the obturation gun.
- Specially formulated Gutta Percha with excellent flowing characteristics.
- Easy to heat
- Pkg. of 100

DIAFIL™ A LIGHT CURE, ESTHETIC RESTORATIVE MICRO HYBRID COMPOSITE RESIN

- Micro hybrid composite resin for use in Anterior and Posterior restorations



Start Kit

Benefits

- Unique fillers offer minimum polymerization shrinkage which helps reduce stress and sensitivity on the tooth potentially
- Has excellent fracture toughness, high tensile, compressive strengths for long lasting results
- Very easy handling of acceptable viscosity and good marginal adaptation
- Remarkable color stability and superior quality of esthetics
- High Level of radiopacity

Packages

• Start Kit

- 5 composite resin syringes (4g)
- 1 Bottle bonding agent(5ml)
- 1 Etching gel syringe(3ml)
- Accessories: 50 brush tips, 1 brush handle, mixing well, mixing pad, 10 disposable needle tips, shade sheet

Set	Composite Resin Shades	ITEM No.
START KIT A SET	A1, A2, A3, A3.5, B2	2001-1101
START KIT B SET	A2, A3, A3.5, B2, B3	2001-1102
START KIT C SET	A1, A2, A3, A3.5, C2	2001-1103



Refill Package

• Refill Package

- 1 syringe x 4g

A1	2001-1201	B2	2001-1207
A2	2001-1202	B3	2001-1208
A3	2001-1203	C2	2001-1210
A3.5	2001-1204	C3	2001-1211
A4	2001-1205	A20	2001-1212
B1	2001-1206	A30	2001-1213



Capsule Type

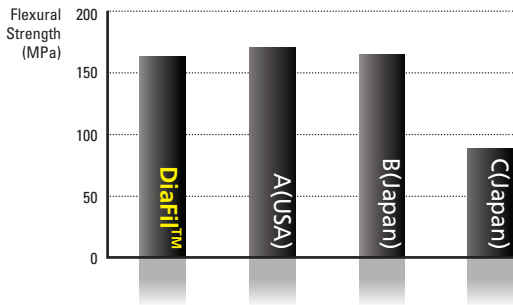
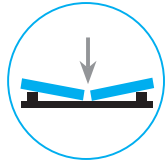
• Capsule Type

- 0.25g x 20 capsules

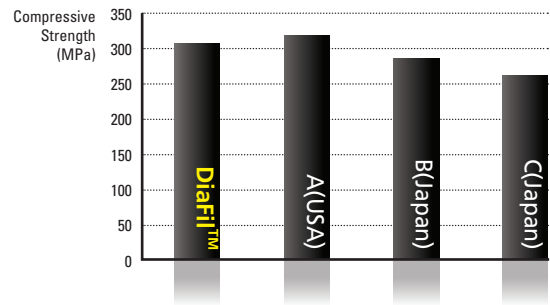
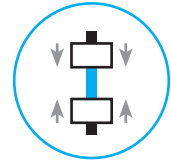
A1	2001-1405
A2	2001-1401
A3	2001-1402
A3.5	2001-1403
B2	2001-1404

PHYSICAL PROPERTIES

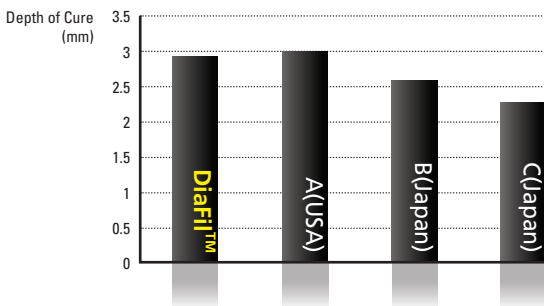
Flexural Strength



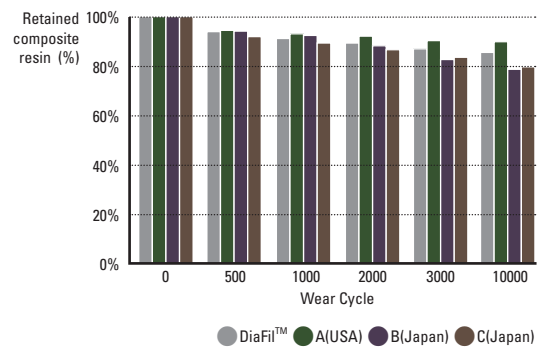
Compressive Strength



Depth of Cure



Abrasive, Wear Resistance



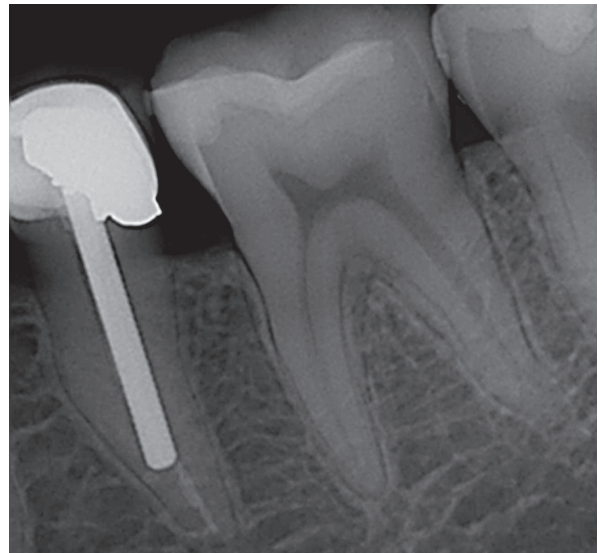
● POSTERIOR RESTORATION



● ANTERIOR RESTORATION



● HIGH RADIOPACITY



DIAFIL™ FLOW

LIGHT CURED FLOWABLE RESTORATIVE COMPOSITE RESIN

Flowable composite with very easy handling and high strength



Benefits

- Has a high level of fluoride release with no slump, run which helps a fast techniques and handling
- Enables to be used in various restorative procedures
 - : Class III, V and IV direct restorations
 - A liner for Class I, II
 - Pit & Fissure sealant where is required
 - Well suited for minimally invasive dentistry
- Excellent tensile strength and low shrinkage
- High radiopaque materials

Packages

• **Economic Package**

- Flowable Resin 2g × 4 syringes
(Available shade A1, A2, A3, A3.5, B2, B3, C2)
- 40 disposable tips(black)
- Shade Sheet

• **Refill Package**

- Flowable Resin 2g × 1 syringe
(Available shade A1, A2, A3, A3.5, B2, B3, C2, A20, A30)
- 10 disposable tips(black)

SHADE	Economic Pkg.	Refill Pkg.
A1	2001-4101	2001-4201
A2	2001-4102	2001-4202
A3	2001-4103	2001-4203
A3.5	2001-4104	2001-4204
B2	2001-4105	2001-4205
B3	2001-4106	2001-4206
C2	2001-4107	2001-4207
A20		2001-4208
A30		2001-4209

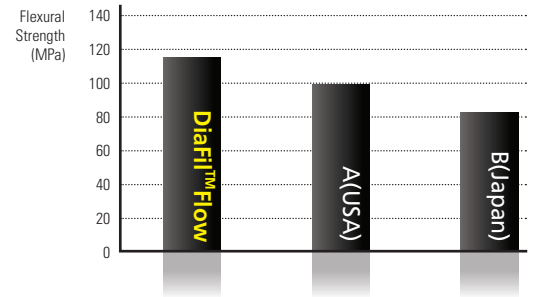
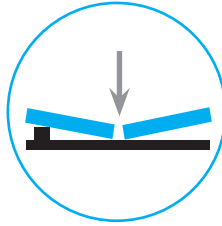
• **Disposable Tips**

- 2001-6108 Bag of 100 pcs

PHYSICAL PROPERTIES

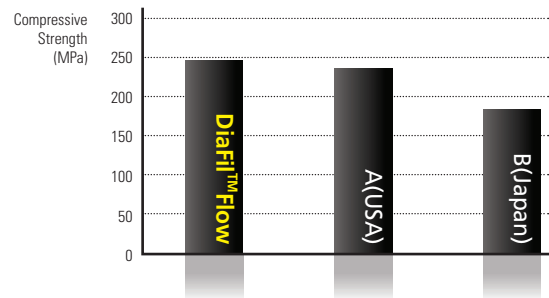
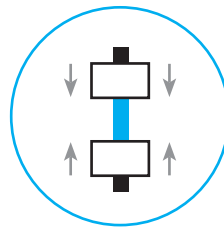
Flexural Strength

The flexural strength is measured by pressing a stick-typed experimental material. Flexural strength is the value obtained when the sample breaks, fixing both ends of sample and pressing in the middle of it. This test combines the forces found in compression and tension. DIAFIL™ FLOW shows statistically higher than other 2 brands.



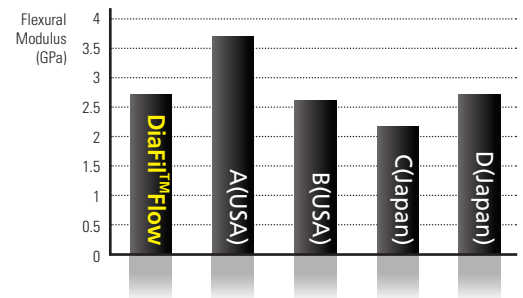
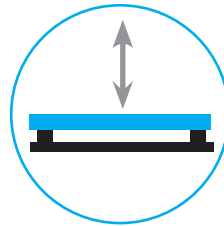
Compressive Strength

Compressive strength is particularly important because it is related with masticating forces. Rods are made of the material and simultaneous forces are applied to the opposite ends of the sample length vertically. The sample failure is a result of shear and tensile forces. DIAFIL™ FLOW is statistically higher than other brands.



Flexural Modulus

Flexural modulus is a method of defining a material's stiffness. A low modulus indicates high flexible material. DIAFIL™ FLOW shows a similar flexural elastic rate with other flowable composite resins.



●RESTORATION WITH DIAFIL™FLOW



DIAPLUS™

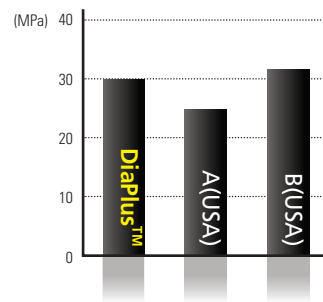
SINGLE COMPONENT BONDING AGENT

Recommended for all direct composite restorations, light-cured bonding procedures

Benefits

- High dentin, enamel bond strength performance
- Available in all classes of direct composite restoration
- Indirect restorations of Porcelain, Amalgam or Composite Repair after light curing with a minimal film thickness
- Ethanol-based bonding agent enables to maintain its exceptional bond strength

Shear bond strength(MPa)



Packages

- **ITEM #2001-2101**
- one-bottle bonding agent (1 bottle x 5ml)



DISPOSABLE BRUSHES

- Flexible adhesive tip allows restorations and small objects of all kind to be picked up, held, carried and placed quickly and easily
- These brushes are included DiaPlus G7's Regular Package

Size	ITEM NO.
Small	2001-6301
Medium	2001-6302
Large	2001-6303

(Pkg. of 100)



DIAPLUS™ G7 SINGLE COMPONENT SELF-ETCHING LIGHT-CURED BONDING AGENT

DiaPlus™ G7, the innovative 7th Generation bonding agent and offers superior and consistent bonding results on dentin and enamel with one bottle, one coat self-etching bonding agent system.

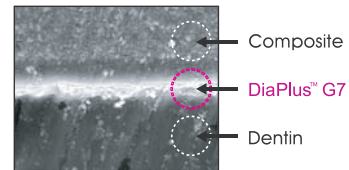


Benefits

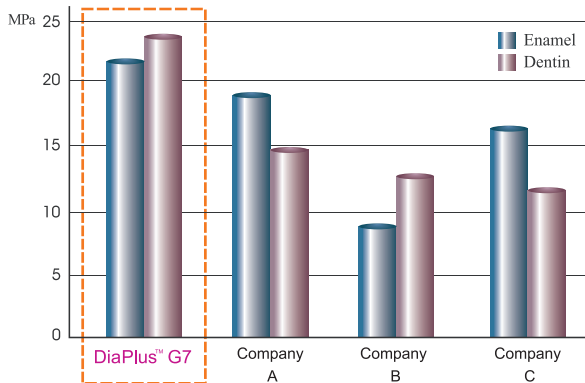
- Has **Etch, Desensitize, Prime and Bond** all with One-Bottle, One-Coat bonding system and no separate etching
- **Fast 3 Steps** (less than 35 seconds) reduces the risk of contamination
- Offer a **tight and long-lasting bond** between light-cured composite and both enamel and dentin by a highly advanced formulation whether wet or dry on dentin and enamel
- **Strong and tight bond** to dentin and enamel is offered by 4-MET monomer for adhesive to dentin and Phosphoric Acid Ester Monomer for superior bonding strength to enamel
- Consistent and **a long term bond strength** with the unique Nano-Filler
- Provide a very low risk of post-operative sensitivity
- **Remarkable thin bonding layer** less than 10^{um} offers a frosty surface for much easier application of the first composite layer

Refill Package

- **ITEM #2001-2702**
 - One bottle bonding agent (1 bottle x 5ml)

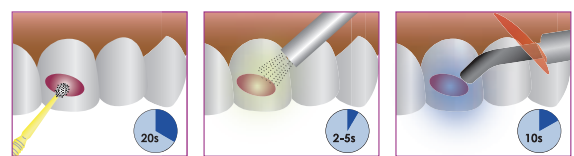


Thin Bonding Layer



Superior Bond Strength

- One coat, simple and fast bonding application



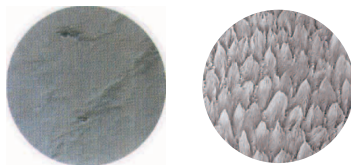
- 1** Apply Bonding Agent with scrubbing for 20 seconds.
- 2** Dry with high pressure air for 2-5 seconds.
- 3** Light cure for 10 seconds.

Less than 35 seconds

Technique Guide

DIAETCH™ 37%

A 37% ETCHING GEL PHOSPHORIC ACID



Before After
(Microphotographs of premolar, X1,000)

A phosphoric acid is used in etch enamel and/or dentin

Benefits

- Phosphoric acid etching of enamel and dentin with ideal thickness
- Quick and effective application to the desired place
- Enables to rinse completely and easily from the tooth surface
- High biocompatibility

Packages

Economic Package Type A

- ITEM #2001-3101 - 5 Syringes x 5ml and 20 disposable tips

Economic Package Type B

- ITEM #2001-3102 - 5 syringes x 3ml and 20 disposable tips

Refill Package Type A

- ITEM #2001-3202 - 1syringe x 5ml and 5 disposable tips

Disposable Tips

- ITEM #2001-6109 - Bag of 100 pcs.

DIASEAL™

A LIGHT CURE PIT & FISSURE SEALANT

Designed for sealing enamel pits and fissures of teeth to prevent caries

Benefits

- UDMA series monomer and Nano-filler offers high flowability, excellent wear resistance and strength
- Optimal viscosity to flow easily and helps for easy application
- Ensures hygienic and easy delivery and outstanding versatility
- High visual verification during application

Packages

Refill Package

- ITEM #2001-5201
- Sealant 1 syringe x 1.2ml
- 5 disposable needle tips



Properties

Mean value and standard deviation of micro-leakage score

Materials	Micro-leakage score (standard deviation)
DiaSeal™	1.0000(1.1094)
U	1.7333(1.4829)
M	0.9167(1.2795)

Thermocycling 500 times, 1% Methylene blue solution

Disposable Tips

- ITEM #2001-6110 - Bag of 100 pcs.

DIAFIL CORE™ AUTOMIX**DUAL CURED CORE BUILD-UP COMPOSITE****NEW**

Dual-curing(Light and self-curing) core build-up and radiopaque two-component composite materials in Automix delivery system

**Benefits**

- Comfortable dispenser: Automix syringes deliver a correct and consistent mix on every uses
- Easy and precise application with Automix and Intraoral tips
- Dual curing: Light cure for 40 seconds or Chemical cure within 4 minutes
- High compressive strength composite resin and long-term durability
- Cuts and wears like dentin
- Superior bond strength with DiaPlus
- Available 2 colors : Natural color(A3 shade) for the optimal esthetic results and Blue color

Packages

- **ITEM#2001-8101 Natural Color(A3 shade)**
- **ITEM#2001-8102 Blue Color**
 - 2 syringes of 9g
 - 10 Intraoral tips
 - 10 Automix tips
- **ITEM #2001-8109**
 - 20 Automix tips and 20 Intraoral tips

DIAFIL CORE™**SELF-CURING CORE BUILD-UP COMPOSITE**

Self-curing and long-term fluoride releasing composite materials consist of two-components, base plus catalyst for core build-up system

**Benefits**

- Provides good handling properties for easier use
- Offers more faster self cure set time
- Smooth and creamy materials help fill it into needle tips very easily
- High level of radiopacity

Packages

- **ITEM #2001-7101**
 - 10g Base + 10g Catalyst
 - 15 Spatulas
 - 50 Mixing pads
 - 10 Needle tips

D-LUX

CORDLESS LED CURING LIGHT

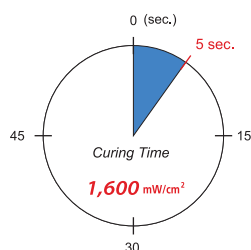
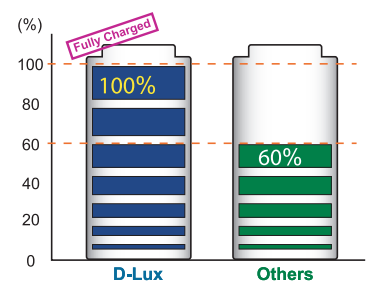


D-Lux is a new advanced cordless LED curing light. Made from the highest quality aluminum, D-Lux dissipates heat quickly to prevent overheating problem so that it can produce the maximum light intensity safely and consistently.

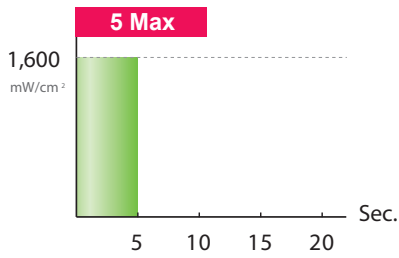
Features

- **OLED panel:** unique and advanced one-button control
- A high intensity of **1,600 mW/cm²** offers extremely short curing times of no more than **5 seconds**
- Cordless, highly portable and lightweight (only 155g)
- Unique ergonomic design: provides comfortable grip and easy-to-read OLED panel
- Durable one-piece aluminum design is robust and easy to disinfect
- High-performance lithium-ion battery technology:
 - A new fully charged battery provides 160 x 10-second cures
 - OLED panel conveniently indicates battery life and a countdown timer for the next needed charge
 - Battery can be fully recharged in 90 minutes
- **5 versatile curing modes** for every indications
- Easy to change the battery pack

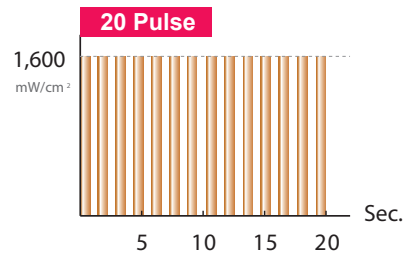
Product Features

Simple & Intuitive
OLED ButtonHigh Intensity
OutputFast Charging
System (90min)

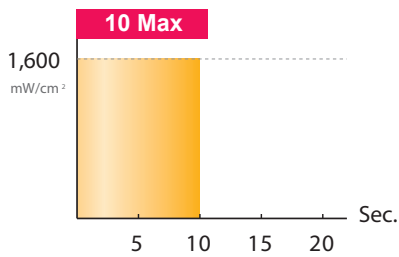
5 Curing Modes



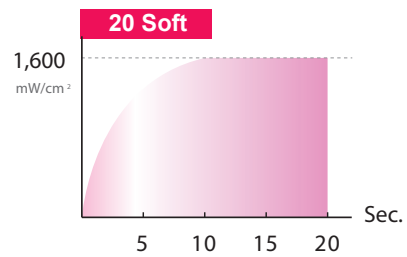
5 Max:
Maximum light intensity output for 5 seconds



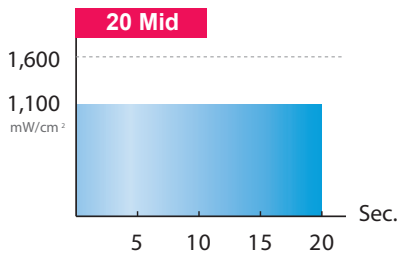
20 Pulse:
Pulses every 0.15 seconds for 20 seconds at maximum light intensity



10 Max:
Maximum light intensity output for 10 seconds



20 Soft:
An initial 10% output of maximum light intensity that gradually increases to full power in 10 seconds, followed by 10 seconds output at full power



20 Mid:
70% output of maximum light intensity for 20 seconds



Package

- **ITEM #4004-1001 Regular Kit**
 - D-Lux Handpiece & Charger
 - Accessories: Light Guide(11 × 11mm), Plastic Protector, Power Supply and Cord

Device Part Codes

- **ITEM #4004-1110 Handpiece**
- **ITEM #4004-1120 Charger**
- **ITEM #4004-1130 Light Guide(11 × 11mm)**
- **ITEM #4004-1150 Battery Pack**
- **ITEM #4004-1160 Plastic Protector**
- **ITEM #4004-1170 Power Supply (Adapter)**
- **ITEM #4004-1171 Power Cord**

Endo-Clear™**WATER BASED EDTA ROOT CANAL CLEANSER**

Endo-Clear™ is the EDTA root canal cleanser, colorless and clear without foreign matters and effectively cleans the canal and removes smear layer. Chelating effect of Endo-clear™ softens root canal wall, dissolves calcium and removes it.

Characteristics

- Debridement in the root canal
- Dissolution of pulp remnants
- Removal of smear layer
- Microbicidal treatment within the canal
- Water based type

Benefits

- Chelating effect of Endo-Clear™ make root canal wall softened and calcium dissolved.
- Easy to enlarge the canal and clean it.
- Endo-Clear™ perfectly removes smear layer.
- Superior microbicidal treatment within the canal
- Excellent dissolution effect of pulp remnants
- Being based on water, more easier to get to apical area where hard for cream type to reach. So it effectively removes smear layer around apical area better than cream type.

Packages

- | | | |
|------------------------------------|------------------------------|------------------------------------|
| Regular Package | | |
| • ITEM # 2002-5001 Regular Package | EDTA 17% Solution 100 ml x 1 | Dia-Flex (=Irrigation syringe) x 1 |
| | Disposable tips x 3 | |
| • ITEM # 2002-5002 Refill Package | EDTA 17% Solution 100 ml x 1 | |

**DIAPREP™ Plus****EDTA ROOT CANAL PREPARATION CREAM**

EDTA Cream with Urea Peroxide, used as an irrigation agent for chemo-mechanical preparation of the root canal.

Characteristics

- Debridement in the root canal
- Dissolution of pulp remnants
- Removal of smear layer
- Facile movements of canal instruments
- Microbicidal treatment within the canal
- Clearance of dentin tubules and apical area

Benefits

- EDTA removes smear layer, softens dentin, and facilitates the removal of calcific obstruction.
- Urea Peroxide reacts with Sodium Hypochlorite to produce oxygen bubbles that flush out debris within the canal.
- The lubricant medium facilitates instrument movement within the canal to eliminate instrument binding or breakage.
- Unclogged dentin tubules and apical area permit better penetration of root canal medicaments and fillings.
- Provides rapid cleansing and enlarging of canals due to EDTA, which softens walls and smooth calcium deposits.
- Easier placement into canals than liquids.

Packages

- ITEM # 2002-1100 - 2 syringes of 6g, 10 disposable tips and 1 protective cap
- ITEM # 2001-6111 - 20 Disposable tips in a polybag



NAVIROOT PLUS ELECTRONIC APEX LOCATOR

NaviRoot is a root canal length measuring device used in dental and endodontic treatment.

Accurate Measurement in Any Canal Condition

- Greater accuracy and predictability in wet canals
- Automatic calibration for very accurate diagnosis in any canal condition

Larger Screen

- Large screen with digital and graphical feedback
- Can be connected to personal computer and can be built in the unit chair:
The cable goes into RS232 port of a computer after setting up application software

Longer Battery Life

- Auto Power Off Function (Timer 8 minutes)
- Easy to read battery power indication
- Use AA type alkaline battery (3ea included in a package)
- Can be used rechargeable battery

High-Tech New Model for the Dentist

- advanced function produces clinical accuracy rate and predictability
- Hi-Technology design has great stability and ergonomic applicability
- Self diagnosis for the system failure

Simple & Easy to use

- Holder & Touch Type Probes included
- Folderable screen adjusts to desired viewing angle

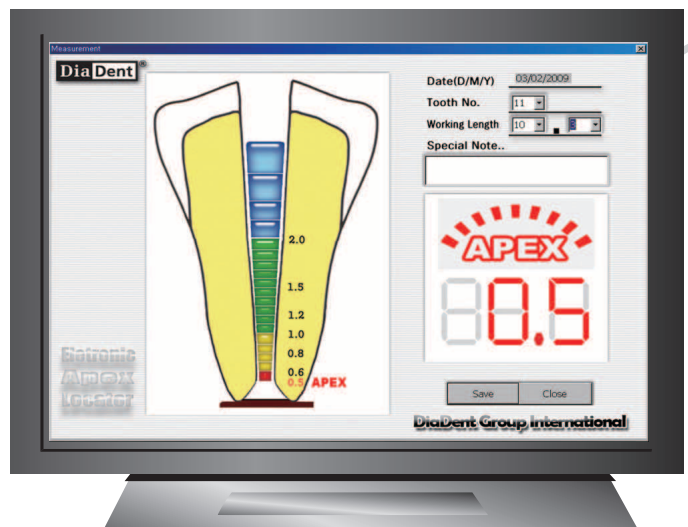


Packages

- **ITEM#2120-2002 NaviRoot Plus Regular Kit White**
- Apex Locator
- Accessories: File holder, Cable, Lip Clip, Y-shaped stick, Application Software, RS232 Cable

Accessories

- **ITEM#2120-1010 File Holder**
- **ITEM#2120-1020 Cable**
- **ITEM#2120-1030 Lip Clip**
- **ITEM#2120-1040 Y-shaped Stick**
- **ITEM#2120-1050 Application Software**
- **ITEM#2120-1060 RS232 Cable**



<NaviRoot Plus connected to the personal computer>

HELIX™

NICKEL TITANIUM ROTARY FILES

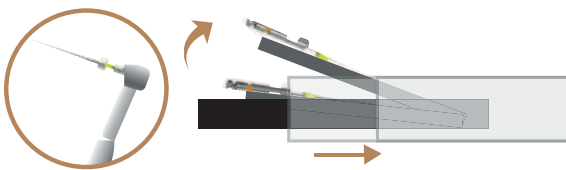
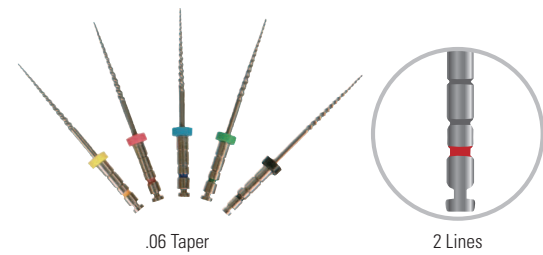
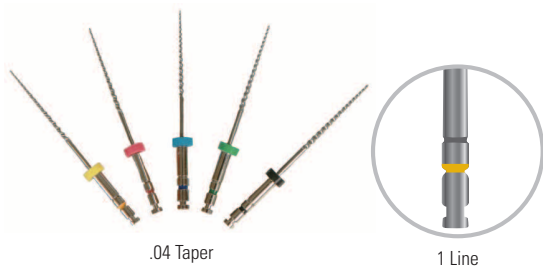


Benefits

- Made of Superior Nickel Titanium Alloy for Engine Driven use.
- Specially designed for the crown-down technique.
- Offers a smooth and progressive enlargement of the canal.
- Helix NiTi Rotary Files help to ease around curved canals and make a tapered preparation.
- Helix NiTi Rotary Files use ISO Color identification and come in 21mm and 25mm lengths.
- With amazing flexibility, easily move through canals, especially severely curved canals.
- High resistance to cyclic fatigue and file separation.
- Offers outstanding flexibility, cutting ability and reduce user fatigue.
- Ergonomic handle provides comfort and excellent tactile feedback.
- Recommended Speed: 150~350r/min

Direction

- ① Place #10 K-File to as far as it goes in the canal or to approximately Coronal 2/3rd. The file is preferably coated with Dia-Prep Plus (EDTA gel).
- ② Prepare Glide path with #15 K-file to the Level previously explored by #10 K- file.
- ③ Shape with Helix NiTi Rotary files #40 (Black ring) with 0.06 taper (2 lines) to Coronal 1/3rd to Coronal 2/3rd.
- ④ Additionally shape with Helix NiTi Rotary files #30 (Blue Ring) 0.06 taper to Coronal 2/3rd.
- ⑤ Explore with #8 K-File, #10 K-File to the Working Length determined with Apex Locator(NaviRoot Plus) and X-ray.
- ⑥ Prepare Glide Path with #15 K-file to the Working Length.
- ⑦ Shape with Helix NiTi Rotary files #20 (Yellow ring) with 0.04 taper (1 line) to the Working Length.
- ⑧ Determine to what size Apical Shaping is needed.
- ⑨ Shape with Helix Rotary NiTi files #20, #25 or #30 with 0.04 or 0.06 Taper for final Apical Shaping.
- ⑩ Frequent irrigation with Sodium Hypochlorite solution and Lubrication with Dia-Prep Plus (EDTA Gel) throughout the Procedure is recommended.
- ⑪ Proceed to fit appropriate size of DiaDent Gutta Percha Points cones (Dia-Prolo Plus).



Size	21MM		25MM	
	.04	.06	.04	.06
#20	NT505-104	NT506-104	NT505-204	NT506-204
#25	NT505-105	NT506-105	NT505-205	NT506-205
#30	NT505-106	NT506-106	NT505-206	NT506-206
#35	NT505-107	NT506-107	NT505-207	NT506-207
#40	NT505-108	NT506-108	NT505-208	NT506-208
#20/35	NT505-193	NT506-193	NT505-293	NT506-293

(Pkg. of 6)

HELIX ORGANIZER



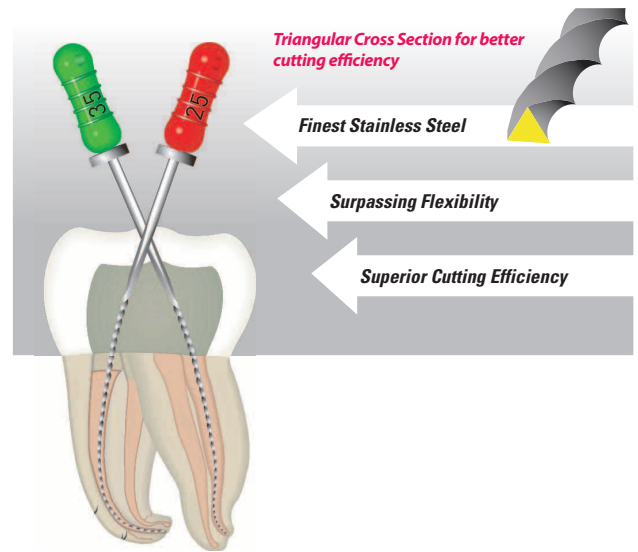
- **ITEM #806-103 Red**
- **ITEM #806-104 Blue**
 - Ideal for Organizing Helix Files
 - Holds 10 Helix Files
 - Removable insert for Cleaning
 - Dimensions: 50 x 50 x 45m/m(W x H x D)

DIA-FLEX FILE



- Made of high-quality Stainless Steel for creating a more fracture-resistant shape and edge
- Enables a complete preparation of even severely curved and narrow canals
- Offers better Cutting Power and Flexibility to shape any root canals easily, safely and very fast
- Available in Sizes 15 through 40 and 21mm, 25mm and 31mm lengths

FLEXIBLE K-FILE



Size	21MM	25MM	31MM
#15	505-103	505-203	505-303
#20	505-104	505-204	505-304
#25	505-105	505-205	505-305
#30	505-106	505-206	505-306
#35	505-107	505-207	505-307
#40	505-108	505-208	505-308
#15/40	505-191	505-291	505-391

(Pkg. of 6)

DIA-SPIRAL FILLER

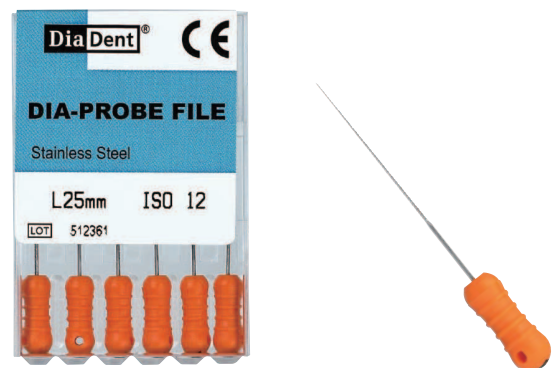


- Lentulo Paste filler used to evenly distribute root canal sealer and cement in the root canal system
- Conical shape made from grinded wire and made of high grade stainless steel with gradual spirals
- Rather stiff without the safety spiral
- Available in Sizes 25 to 40 and 21mm, 25mm lengths

Size	21MM	25MM
#25	507-105	507-205
#30	507-106	507-206
#35	507-107	507-207
#40	507-108	507-208
#25/40	507-191	507-291

(Pkg. of 4)

DIA-PROBE FILE



- Canal Probe
- The minimal taper helps to perform intermediate steps in the calcified or curved canals
- Available in Size #12 and 21mm, 25mm lengths

Size	21MM	25MM
#12	506-101	506-201

(Pkg. of 6)

GATE DRILLS

- Used for time-saving preparation of the upper and middle part of non-curved canal or the straight part of curved canal effectively and creating the excellent access for Reamers and Files.
- Enlarge the straight coronal portion of the canal with Gate Drills and then step down with Endodontic Files using the biggest size firstly as the Crown Down Technique.
- Superior Stainless Steel with the improved cutting capacity.
- Circle ring is coded on the shank.
- Recommended Speed: 800~1200r/min

Size	28mm	32mm
#1	531-101	531-201
#2	531-102	531-202
#3	531-103	531-203
#4	531-104	531-204
#5	531-105	531-205
#6	531-106	531-206
#Asst1/6	531-191	531-291

(Pkg. of 6)



PEESO REAMERS

- Used for the preparation of coronal third and picking up the fillings inside the root canal.
- Often used for the post path.
- Excellent stainless steel with a sharper blade to provide the rapid enlargement.
- Circle ring is coded on the shank.
- Recommended speed: 800~1200r/min

Size	32mm
#1	541-201
#2	541-202
#3	541-203
#4	541-204
#5	541-205
#6	541-206
#Asst1/6	541-291

(Pkg. of 6)



ENDODONTIC NICKEL TITANIUM HAND FILES/PLASTIC PACKAGE

Increased Flexibility

: NiTi Shaft is made of premium Nickel-Titanium with 5 times the flexibility compared to Stainless Steel Files.

Strength

: NiTi has 10 times the stress resistance compared to Stainless Steel Files.

Convenience

: Produces smooth and progressive enlargement of root canal.
NiTi follow existing canal path and has memory so there is no need to Pre-Bend the files.

Efficiency

: Color Coded handles and pre-inserted silicone stops.

Safety

: NiTi resists spontaneous breakage.
Increased angular rotation reduces fracture.
NiTi decreases zipping and stripping.



NITI REAMERS



NICKEL-TITANIUM REAMERS(.02 TAPER)

size	21MM	25MM
#8	NT501-101	NT501-201
#10	NT501-102	NT501-202
#15	NT501-103	NT501-203
#20	NT501-104	NT501-204
#25	NT501-105	NT501-205
#30	NT501-106	NT501-206
#35	NT501-107	NT501-207
#40	NT501-108	NT501-208
#45	NT501-109	NT501-209
#50	NT501-110	NT501-210
#55	NT501-111	NT501-211
#60	NT501-112	NT501-212
#70	NT501-113	NT501-213
#80	NT501-114	NT501-214
#15/40	NT501-191	NT501-291
#45/80	NT501-192	NT501-292

(Pkg. of 6)

NITI K-FILES



NICKEL-TITANIUM K-FILES(.02 TAPER)

size	21MM	25MM
#8	NT502-101	NT502-201
#10	NT502-102	NT502-202
#15	NT502-103	NT502-203
#20	NT502-104	NT502-204
#25	NT502-105	NT502-205
#30	NT502-106	NT502-206
#35	NT502-107	NT502-207
#40	NT502-108	NT502-208
#45	NT502-109	NT502-209
#50	NT502-110	NT502-210
#55	NT502-111	NT502-211
#60	NT502-112	NT502-212
#70	NT502-113	NT502-213
#80	NT502-114	NT502-214
#15/40	NT502-191	NT502-291
#45/80	NT502-192	NT502-292

(Pkg. of 6)

NITI H-FILES



NICKEL-TITANIUM H-FILES(.02 TAPER)

size	21MM	25MM
#8	NT503-101	NT503-201
#10	NT503-102	NT503-202
#15	NT503-103	NT503-203
#20	NT503-104	NT503-204
#25	NT503-105	NT503-205
#30	NT503-106	NT503-206
#35	NT503-107	NT503-207
#40	NT503-108	NT503-208
#45	NT503-109	NT503-209
#50	NT503-110	NT503-210
#55	NT503-111	NT503-211
#60	NT503-112	NT503-212
#70	NT503-113	NT503-213
#80	NT503-114	NT503-214
#15/40	NT503-191	NT503-291
#45/80	NT503-192	NT503-292

(Pkg. of 6)

ENDODONTIC NICKEL TITANIUM HAND FILES/BLISTER PACKAGE



- Blister package for single use
- Increased Flexibility
- Strength
- Convenience
- Efficiency
- Safety

NITI REAMERS



NICKEL-TITANIUM REAMERS(.02 TAPER)

size	21MM	25MM
#8	NTB501-101	NTB501-201
#10	NTB501-102	NTB501-202
#15	NTB501-103	NTB501-203
#20	NTB501-104	NTB501-204
#25	NTB501-105	NTB501-205
#30	NTB501-106	NTB501-206
#35	NTB501-107	NTB501-207
#40	NTB501-108	NTB501-208
#45	NTB501-109	NTB501-209
#50	NTB501-110	NTB501-210
#55	NTB501-111	NTB501-211
#60	NTB501-112	NTB501-212
#70	NTB501-113	NTB501-213
#80	NTB501-114	NTB501-214
#15/40	NTB501-191	NTB501-291
#45/80	NTB501-192	NTB501-292

(Pkg. of 6)

NITI K-FILES



NICKEL-TITANIUM K-FILES(.02 TAPER)

size	21MM	25MM
#8	NTB502-101	NTB502-201
#10	NTB502-102	NTB502-202
#15	NTB502-103	NTB502-203
#20	NTB502-104	NTB502-204
#25	NTB502-105	NTB502-205
#30	NTB502-106	NTB502-206
#35	NTB502-107	NTB502-207
#40	NTB502-108	NTB502-208
#45	NTB502-109	NTB502-209
#50	NTB502-110	NTB502-210
#55	NTB502-111	NTB502-211
#60	NTB502-112	NTB502-212
#70	NTB502-113	NTB502-213
#80	NTB502-114	NTB502-214
#15/40	NTB502-191	NTB502-291
#45/80	NTB502-192	NTB502-292

(Pkg. of 6)

NITI H-FILES



NICKEL-TITANIUM H-FILES(.02 TAPER)

size	21MM	25MM
#8	NTB503-101	NTB503-201
#10	NTB503-102	NTB503-202
#15	NTB503-103	NTB503-203
#20	NTB503-104	NTB503-204
#25	NTB503-105	NTB503-205
#30	NTB503-106	NTB503-206
#35	NTB503-107	NTB503-207
#40	NTB503-108	NTB503-208
#45	NTB503-109	NTB503-209
#50	NTB503-110	NTB503-210
#55	NTB503-111	NTB503-211
#60	NTB503-112	NTB503-212
#70	NTB503-113	NTB503-213
#80	NTB503-114	NTB503-214
#15/40	NTB503-191	NTB503-291
#45/80	NTB503-192	NTB503-292

(Pkg. of 6)

ENDO STOP DISPENSER

• **ITEM #701-000**

- Contains 120 Assorted Round stops.
- Easy to use.
- Features ruler for measuring.



- Available Round Type.
- 100 Stops per poly bag.

White	701-101
Yellow	701-102
Red	701-103
Blue	701-104
Green	701-105
Black	701-106
Assorted	701-191

ENDODONTIC STAINLESS STEEL HAND FILES

- Root canal cleaning and shaping instruments
- Offers superior cutting efficiency on insertion and withdrawal and procession handling
- Ergonomic color coded handle provides comfort and excellent tactile feedback
- Available in sizes 8 through 80 and 21mm, 25mm & 31mm lengths



REAMERS

- Made from Stainless Steel wire that is ground to triangular shape and twisted

size	21MM	25MM	31MM
# 8	SS501-101	SS501-201	SS501-301
# 10	SS501-102	SS501-202	SS501-302
# 15	SS501-103	SS501-203	SS501-303
# 20	SS501-104	SS501-204	SS501-304
# 25	SS501-105	SS501-205	SS501-305
# 30	SS501-106	SS501-206	SS501-306
# 35	SS501-107	SS501-207	SS501-307
# 40	SS501-108	SS501-208	SS501-308
# 45	SS501-109	SS501-209	SS501-309
# 50	SS501-110	SS501-210	SS501-310
# 55	SS501-111	SS501-211	SS501-311
# 60	SS501-112	SS501-212	SS501-312
# 70	SS501-113	SS501-213	SS501-313
# 80	SS501-114	SS501-214	SS501-314
# 15/40	SS501-191	SS501-291	SS501-391
# 45/80	SS501-192	SS501-292	SS501-392

(Pkg. of 6)

K-FILES

- Designed to clean and shape root canals
- Produced to give operators a smooth tactile sense inside the canal during instrument

size	21MM	25MM	31MM
# 8	SS502-101	SS502-201	SS502-301
# 10	SS502-102	SS502-202	SS502-302
# 15	SS502-103	SS502-203	SS502-303
# 20	SS502-104	SS502-204	SS502-304
# 25	SS502-105	SS502-205	SS502-305
# 30	SS502-106	SS502-206	SS502-306
# 35	SS502-107	SS502-207	SS502-307
# 40	SS502-108	SS502-208	SS502-308
# 45	SS502-109	SS502-209	SS502-309
# 50	SS502-110	SS502-210	SS502-310
# 55	SS502-111	SS502-211	SS502-311
# 60	SS502-112	SS502-212	SS502-312
# 70	SS502-113	SS502-213	SS502-313
# 80	SS502-114	SS502-214	SS502-314
# 15/40	SS502-191	SS502-291	SS502-391
# 45/80	SS502-192	SS502-292	SS502-392

(Pkg. of 6)

H-FILES

- Ground from Stainless Steel wire
- The flute depth increases with the taper, creating a shaper, more flexible instrument

size	21MM	25MM	31MM
# 8	SS503-101	SS503-201	SS503-301
# 10	SS503-102	SS503-202	SS503-302
# 15	SS503-103	SS503-203	SS503-303
# 20	SS503-104	SS503-204	SS503-304
# 25	SS503-105	SS503-205	SS503-305
# 30	SS503-106	SS503-206	SS503-306
# 35	SS503-107	SS503-207	SS503-307
# 40	SS503-108	SS503-208	SS503-308
# 45	SS503-109	SS503-209	SS503-309
# 50	SS503-110	SS503-210	SS503-310
# 55	SS503-111	SS503-211	SS503-311
# 60	SS503-112	SS503-212	SS503-312
# 70	SS503-113	SS503-213	SS503-313
# 80	SS503-114	SS503-214	SS503-314
# 15/40	SS503-191	SS503-291	SS503-391
# 45/80	SS503-192	SS503-292	SS503-392

(Pkg. of 6)

BARBED BROACHES

- Designed to remove pulp tissue
- Put it straight into the root canal, rotation at 180° and pull out



size	21MM	25MM
#20(XXXXF)	504-001	504-201
#25(XXXF)	504-002	504-202
#30(XXF)	504-003	504-203
#35(XF)	504-004	504-204
#40(F)	504-005	504-205
#25/40(XXXF/F)	504-092	504-292

(Pkg. of 6)

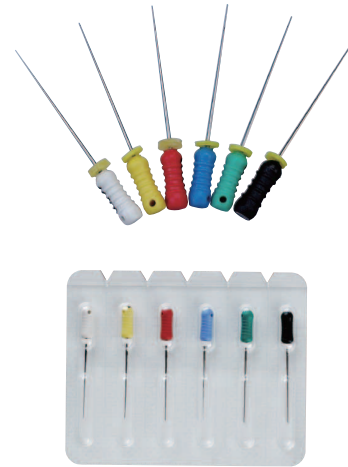
SPREADER



- Used for the lateral condensation of root canal fillings.
- Made of Stainless Steel.
- High Resistance to wear and Excellent Cutting Efficiency.
- 6pcs in a blister package

size	21MM	25MM
#15	520-103	520-203
#20	520-104	520-204
#25	520-105	520-205
#30	520-106	520-206
#35	520-107	520-207
#40	520-108	520-208
#15/40	520-191	520-291

PLUGGER



- Used for the vertical condensation of root canal fillings.
- Made of Stainless Steel.
- High Resistance to wear and Excellent Cutting Efficiency.
- 6pcs in a blister package

size	21MM	25MM
#15	521-103	521-203
#20	521-104	521-204
#25	521-105	521-205
#30	521-106	521-206
#35	521-107	521-207
#40	521-108	521-208
#15/40	521-191	521-291

DIA-KONDENSOR

- Having both a nickel-titanium end and a stainless steel end, it can be used in any common endodontic obturation technique including warm and cold condensation.
- Excellent durability.
- Can be supplied 1 piece or a set included each 4 sizes.
- Convenient use with color-coding on the condensers.
- Lightweight and comfort design

size	ITEM No.
#35/70(Green)	551-101
#40/80(Black)	551-102
#50/100(Yellow)	551-103
#60/120(Blue)	551-104
Set (4pcs)	551-191

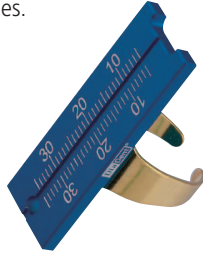


DIA-ENDORING

• **ITEM #850-001**



- A convenient ring for Hand & Rotary Files.
- Gauges from 1 to 30mm.
- A simple & practical design for measuring files.
- Gold plated ring prevents color change.
- Dimension: 45 x 25 x 15m/m (W x H x D)



ENDO FINGERING

• **ITEM #790-101**



- Provides complete control of entire endodontic files.
- Disposable sponges hold files in a convenient position.
- Autoclavable except cups

- Contents :
- **ITEM #790-111 :** Disposable Cups(48pcs)
 - **ITEM #790-121 :** Disposable Sponges(48pcs)
 - Finger Rings(3pcs)
 - Cup Rings(2pcs)

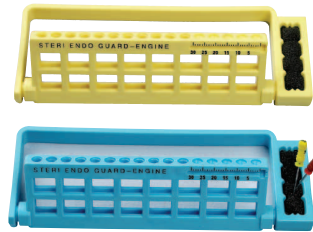


STERI ENDO GUARD W/RULER(ENGINE FILE)

• **ITEM #716-203 Yellow**
• **ITEM #716-206 Blue**



- Holds 16 NiTi Rotary Files.
- Right or left hand use.
- Available to insert sponge to clean or hold files.
- Diameter: 75m/m, Height: 35m/m

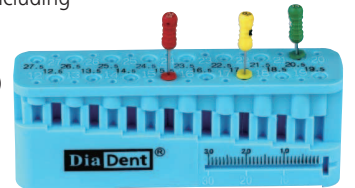


FILE MEASURE SET(PLASTIC)

• **ITEM #780-001**



- Holds 32 Measuring Grades.
- Gauge from 12 to 27.5m/m, Including half measurements.
- Dimensions: 87 x 31 x 20m/m (W x H x D)



DIAFLEX™ IRRIGATION SYRINGE FOR ROOT CANAL



- Flexible soft polypropylene tip syringe for root canal irrigation.
- Autoclavable and chemically for multiple use up to 50 times.
- 1.3ml volume imprinted at intervals of 1mm.
- Provides maximum clinical effect in a minimum of time.
- DiaFlex is compatible with **Lure Lock Syringes**.

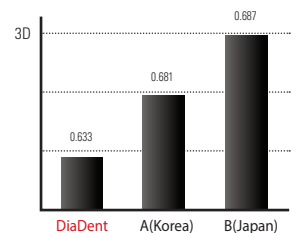
DiaFlex - III

- **ITEM #1003-301**
- Package of 3 color coded syringes, 20 changeable tips and silicone oil

DiaFlex - V

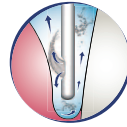
- **ITEM #1003-501**
- Package of 5 color coded syringes, 20 changeable tips and silicone oil

- **ITEM #1001-315**
- Blue 20 disposable tips in a **blister package**



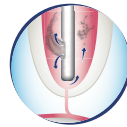
STERI. IRRIGATION TIPS-SIDE OPEN TYPE

- Disposable Endodontic & Periodontal Irrigation Tips with Safety.
- Unique design with a side-port for superior effectiveness and patient comfort in irrigating root canals and periodontal pockets.
- Pre-sterilized by E.O Gas.
- Use with Lure Lock Syringes.
- Side-Port and Closed-end Irrigation tips.



PERIODONTAL POCKETS

- Side-port design make an effective irrigate pockets and closed, rounded tip can reduce the risk of tissue damage.



ROOT CANALS

- Side-port dispersal can create an upward flushing motion for the complete root canal preparations and cleanse the gingival sulci fully without damaging tissue.

size	Color	ITEM No.
31G (0.27 x 25mm)	Clear White	951-101
30G (0.30 x 25mm)	Yellow	951-102
28G (0.36 x 25mm)	Blue Green	951-103

(Pkg. of 50)



IRRIGATION TIPS-END OPEN TYPE



- Disposable Endodontic & Periodontal Irrigation tips
- Use with Lure Lock Syringes.
- Thoroughly irrigate root canal preparations.
- Round end tip can prevent the secondary injury during the use.
- Widest selection of tips: 6 sizes from 18G to 27G.

size	Color	ITEM No.
18G (1.2 x 25mm)	Pink	951-201
19G (1.1 x 25mm)	Cream	951-202
20G (0.9 x 25mm)	Yellow	951-203
22G (0.7 x 25mm)	Black	951-204
25G (0.5 x 25mm)	Orange	951-205
27G (0.4 x 25mm)	Medium Grey	951-206

(Pkg. of 100)



SMALL ROUND TYPE A

- ITEM # 803-003 Red
- ITEM # 803-004 Blue



- Has 6 Silicone Color Coded Silicone Cups.
- Ideal for Organizing Gutta Percha Points & Paper Points.
- Removable Insert for Cleaning.
- Autoclavable silicone cups.
- Diameter: 40m/m, Height: 60m/m



SMALL ROUND TYPE B

- ITEM # 802-003 Red
- ITEM # 802-004 Blue



- Ideal for Organizing Hand Files.
- Holds 20 instruments.
- Removable Insert for Cleaning.
- Diameter: 40m/m, Height: 60m/m



SMALL SQUARE TYPE A

- ITEM #807-003 Red
- ITEM #807-004 Blue



- Has 6 Silicone Color Coded Silicone Cups.
- Ideal for Organizing Gutta Percha Points & Paper Points.
- Removable Insert for Cleaning.
- Autoclavable silicone cups.
- Dimensions: 50 x 50 x 45m/m (W x H x D)



SMALL SQUARE TYPE B

- ITEM #806-003 Red
- ITEM #806-004 Blue



- Ideal for Organizing Hand Files.
- Holds 30 Endo Instruments.
- Removable Insert for Cleaning.
- Dimensions: 50 x 50 x 45m/m (W x H x D)



MEDIUM OBLONG TYPE A

- ITEM #801-003 Red
- ITEM #801-004 Blue



- A Versatile & Practical Organizer with a Clean Grip for Hand & Rotary File as well as Cups for Gutta Percha & Paper Points.
- Holds 36 Instruments, 3 Silicone Cups, 1 Clean Grip.
- Removable Insert for Cleaning.
- Dimensions: 130 x 50 x 50m/m (W x H x D)



MEDIUM OBLONG TYPE B

- ITEM #809-003 Red
- ITEM #809-004 Blue



- A Versatile & Practical Organizer for Hand & Rotary File as well as Cups for Gutta Percha & Paper Points.
- Holds 60 Instruments, 4 Silicone Cups.
- Removable Insert for Cleaning.
- Dimensions: 130 x 50 x 50m/m (W x H x D)



MEDIUM ROUND

- ITEM # 821-001 Silver



- Ideal for Organizing Hand Files & Gutta Percha Points & Paper Points.
- Holds 64 Instruments, 4 Color Coded Silicone Cups.
- Removable Insert for Cleaning.
- Diameter: 92m/m, Height: 69m/m



MEDIUM SQUARE

- ITEM #804-003 Red
- ITEM #804-004 Blue



- A Versatile & Practical Organizer with a Clean Grip for Hand & Rotary File as well as Cups for Gutta Percha & Paper Points.
- Features a Endo Meter for measuring Files & Points.
- Holds 5 Burs, 30 Instruments, 6 Silicone Cups, 1 Clean Grip, Endo Meter and 1 location for small instruments.
- Removable Insert for Cleaning.
- Dimensions: 120 x 50 x 80m/m (W x H x D)



DIA-DELUXE

• ITEM #811-003 Red



- DiaDent's Ultimate Box for Organizing your Files & Points. Holds 4 Spreaders/Pluggers, 56(21mm) & 48(25mm) Instruments, 6 Gates Glidens, 10 Barbed Broaches, 28 Cups, Section for Cotton.
- Removable Insert for Cleaning.
- Dimensions: 215 x 50 x 100m/m (W x H x D)



SMALL OBLONG-6 COMPT.

• ITEM #805-003 Red

• ITEM #805-004 Blue



- Ideal for Holding Burs & Small Instruments.
- Has 6 Compartments.
- Removable Insert for Cleaning.
- Dimensions: 130 x 15 x 50m/m (W x H x D)

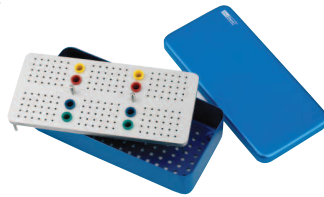


LARGE OBLONG TYPE A

• ITEM #812-004 Blue



- A Simple & Effective Organizer with Sections for your Hand Files.
- Holds 180 Endo Instruments, 8 Color Coded Silicone Cups for Points, perforated bottom case.
- Removable Insert for Cleaning.
- Dimensions: 218 x 53 x 105m/m (W x H x D)



LARGE OBLONG TYPE B

• ITEM #812-005



- An Organizer for Hand & Rotary Files as well as Points.
- Store your Instruments in One Place.
- Holds 357 Endo Instruments, 21 Silicone Cups for Points.
- Removable Insert for Cleaning.
- Dimensions: 205 x 53 x 105m/m (W x H x D)



LARGE OBLONG TYPE C

• ITEM #812-006



- A Very Practical Box. Easy to use inserts individually as needed.
- Holds 206 Endo Instruments, 12 Silicone Cups for Points. Interchangeable Inserts.
- Removable Insert for Cleaning.
- Dimensions: 205 x 53 x 105m/m (W x H x D)

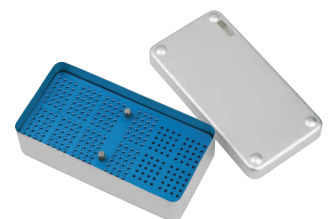


LARGE OBLONG TYPE D

• ITEM #812-007



- Organizer for Hand & Rotary Files.
- Holds 192 Hand Instruments, 80 Rotary Instruments.
- Removable Insert for Cleaning.
- Dimensions: 205 x 53 x 105m/m (W x H x D)



LARGE COMBI

• ITEM # 818-001



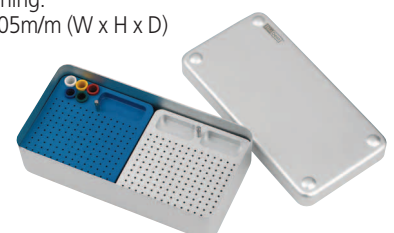
- Versatile & Practical. Allows separation of specific instruments.
- Holds 5 individual Inserts(A+B+C+D+E).
- Insert A : 6 cups + 6 cups
- Insert B : 2 sets of 6 cups & Holds 12 Endo Instruments
- Insert C : 4 cups, Holds 48 Endo Instruments
- Insert D : 2 cups, Holds 48 Endo Instruments
- Insert E : Holds 72 Endo Instruments
- Removable Insert for Cleaning.
- Dimensions: 205 x 53 x 105m/m (W x H x D)



• ITEM # 812-008



- Store your files in one place. Holds 308 Endo Instruments, 5 Color Coded Silicone Cups, 3 Locations.
- 2 Separate Inserts. Height Adjustment(not visible).
- Removable Insert for Cleaning.
- Dimensions: 205 x 53 x 105m/m (W x H x D)



MEDIUM COMBI

• ITEM #817-001



- A Compact & Practical File & Point Organizer.
- Holds 3 Individual Inserts(C+D+E).
Insert C : 4 cups, Holds 48 Endo Instruments
Insert D : 2 cups, Holds 48 Endo Instruments
Insert E : Holds 72 Endo Instruments
- Removable Insert for Cleaning.
- Dimensions: 122 x 50 x 100m/m (W x H x D)



SMALL COMBI TYPE A

• ITEM # 816-010



- A Compact organizer for Gutta Percha & Paper Points.
- Holds 12 Color Coded Silicone Cups.
- Removable Insert for Cleaning.
- Autoclavable silicone cups.
- Dimensions: 105 x 52 x 44m/m (W x H x D)



SMALL COMBI TYPE B

• ITEM #816-020



- A Compact Organizer for Hand & Rotary Files.
- Hold 24 Endo Instruments, 12 Color Coded Silicone Cups for Points.
- Removable Insert for Cleaning.
- Autoclavable silicone cups.
- Dimensions: 105 x 52 x 44m/m (W x H x D)



SMALL COMBI TYPE C

• ITEM #816-030



- A Compact Organizer for Hand & Rotary Files.
- Holds 48 Endo Instruments, 4 Color Coded Silicone Cups for Points.
- Removable Insert for Cleaning.
- Autoclavable silicone cups.
- Dimensions: 105 x 52 x 44m/m (W x H x D)



SMALL COMBI TYPE D

• ITEM #816-040



- A Compact Organizer for Hand & Rotary Files.
- Holds 48 Endo Instruments, 2 Color Coded Silicone Cups for Points.
- Removable Insert for Cleaning.
- Dimensions: 105 x 52 x 44m/m (W x H x D)



SMALL COMBI TYPE E

• ITEM #816-050



- A Compact Organizer for Hand & Rotary Files.
- Holds 72 Endo Instruments.
- Removable Insert for Cleaning.
- Dimensions: 105 x 52 x 44m/m (W x H x D)



SMALL COMBI TYPE F

• ITEM #816-060



- A Compact Organizer for Gutta Percha & Paper Points.
- Holds 12 Color Coded Silicone Cups.
- Removable Insert for Cleaning.
- Autoclavable silicone cups.
- Dimensions: 105 x 52 x 44m/m (W x H x D)



SMALL COMBI TYPE G

• ITEM #816-070



- A Compact Organizer for Hand & Rotary Files.
- Holds 48 Endo Instruments Medium Sized Perforations.
- Removable Insert for Cleaning.
- Dimensions: 105 x 52 x 44m/m (W x H x D)



SMALL COMBI TYPE H

- ITEM #816-080 SILVER
- ITEM #816-084 BLUE



- A Compact Organizer for Hand & Rotary Files.
- Holds 48 Endo Instruments Large Sized Perforations.
- Removable Insert for Cleaning.
- Dimensions: 105 x 52 x 44m/m (W x H x D)



SMALL COMBI TYPE I

- ITEM #816-090 SILVER
- ITEM #816-093 RED



- A Compact Organizer for Hand & Rotary Files.
- Holds 48 Endo Instruments Medium & Large Sized Perforations.
- Removable Insert for Cleaning.
- Dimensions: 105 x 52 x 44m/m (W x H x D)



ENDO GRIP(MINI)

- ITEM #833-001



- Commonly Used for Cleaning Files.
- Holds sponge or gauze.
- Available in Blue.
- Diameter: 40m/m, Height: 35m/m



ENDO CLEANER

- ITEM #834-001 Open
- ITEM #834-002 Closed



- Commonly Used for Cleaning and sterilizing Files.
- Top unscrews for easy replacement of Gauze.
- Diameter: 40m/m, Height: 30m/m



ENDO METER SQUARE

- ITEM # 835-001



- Holds & Measures 32 Files or Other Endo Instruments.
- Gauge from 15 to 30.5m/m, including half measurement.
- 2 Cups for Files, 1 location for Endo Stops.
- Dimensions: 125 x 40 x 40m/m (W x H x D)



LARGE OBLONG EMPTY BOX

- ITEM #820-003 Blue



- An all purpose storage container.
- Ideal for holding accessories.
- Dimensions: 210 x 25 x 50m/m (W x H x D)

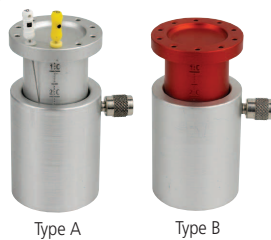


ENDO METER

- ITEM #835-002 Type A- Silver
- ITEM #835-003 Type B- Red



- Holds & Measures 10 Files.
- Gauges from 1 to 35mm.
- Features a locking spring mechanism inside for easy use.
- Diameter: 35m/m, Height: 48m/m



CANAL INSTRUMENT HOLDER

- ITEM #830-001



- Holds 18 Endo Instruments (Files, Reamers).
- 45 degree perforations.
- Dimensions: 50 x 25 x 50m/m (W x H x D)



DIA-100FS/DIA-100SS

- Optical grade protective shields and glasses for the face and eyes from flying debris or substances.
- Lightweight and very comfortable.
- Shields can be quickly positioned and fits over eyeglasses
- Easy to clean, washable

Dia-100FS

- Full face protection shield
- 1 Frame & 5 shields

1005-5010	DIA-100FS	REFILL PACKAGE	5 shields only
1005-5011	DIA-100FS	REGULAR PACKAGE	CRYSTAL
1005-5012	DIA-100FS	REGULAR PACKAGE	WHITE
1005-5014	DIA-100FS	REGULAR PACKAGE	BLUE

DIA-100SS

- Eye protection glasses
- 1 Frame & 5 shields

1005-5020	DIA-100SS	REFILL PACKAGE	5 shields only
1005-5021	DIA-100SS	REGULAR PACKAGE	CRYSTAL
1005-5022	DIA-100SS	REGULAR PACKAGE	WHITE
1005-5024	DIA-100SS	REGULAR PACKAGE	BLUE



DIA-100FS



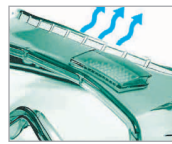
DIA-100SS

DIA-200B

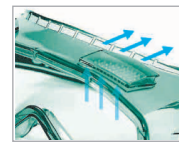
ITEM #1005-1031

- Multi Purpose Goggles. Used among dentists and surgeons for eyes protection from flying debris. Preventing eye injuries and contamination from fine dust.
- Spherical lens design for superior optics.
- Comfortable lightweight fit.
- Fits over Eyeglasses.
- Designed for coolness and ventilation.
- Anti-fog coating, Anti-static.

Product Features



Superior cushioning and ventilation



Good air circulation



Easily used with correction glasses



Anti-fog

Anti-static



Anti-fog coating

DIA-300I

ITEM #1005-1041

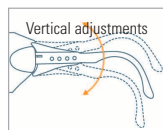
- Protection Glasses. Protect your eyes from flying debris during clinical or laboratory procedures.
- High optical quality lenses with chemical resistance properties.
- Comfort fit at the nose bridge at the temple.
- Lens coating(PC lenses, Anti-fog, Anti-UV, Anti-static)

- Anti-fog
- Anti-UV
- Anti-static

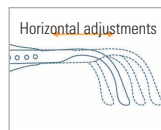


Anti-fog coating

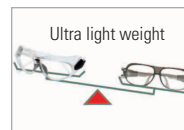
Product Features



Vertical adjustments



Horizontal adjustments



Ultra light weight

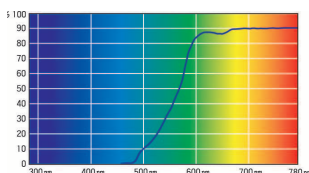


DIA-400D

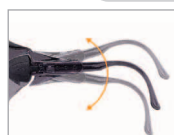
ITEM #1005-1051

- The protective glasses for blue curing light (400-510nm) are used to protect your eyes when curing composite resin.
- Excessive exposure to blue lights will damage your vision and your eyes health.
- Lenses color: Amber

- Anti-fog
- Anti-UV
- Anti-static
- Anti-scratch



Product Features



Vertical adjustments



Horizontal adjustments



Ultra light weight



GERMICIDE TRAY

• **ITEM #711-001**



- Used for Cold Sterilization. Easy & Safe to handle.
- One Large & One Small compartment.
- Easy loading and unloading.
- Dimensions: 263 x 72 x 115 m/m (W x H x D)



GERMICIDE TRAY TYPE B



- **ITEM #711-102 Grey**
- **ITEM #711-104 Mauve**
- **ITEM #711-106 Blue**

- Efficient high-volume germicide tray designed for maximum use of chemicals to clean/disinfect/sterilize instruments
- Dimensions : 350 x 150 x 250 m/m (W x H x D)



CONTAINER(STERILIZING)



• **ITEM #824-001 Type A**

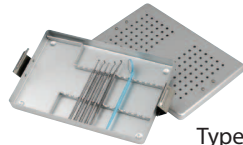
- Holds 10 Endo Instruments.
- Dimensions : 185 x 35 x 145 m/m (W x H x D)



Type A

• **ITEM #824-002 Type B**

- Holds 16 Endo Instruments.
- Dimensions : 185 x 35 x 286 m/m (W x H x D)



Type B

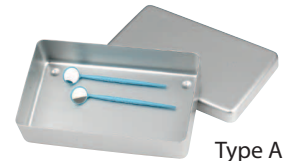
- Well Built, Rigid, Sterilizing Container.
- Features Locking System, Fits many sterilizing units.

CONTAINER(STORAGE)



• **ITEM #829-001 Type A**

- Dimensions: 255 x 50 x 216m/m (W x H x D)



Type A

• **ITEM #829-002 Type B**

- Dimensions: 255 x 50 x 108m/m (W x H x D)



Type B

- Multi Purpose Box.
- Use as an organizer or for storage.
- Bur Holders fit well in this container.

STERILIZING DRUM

• **ITEM # 828-001 Small**

- Diameter: 75m/m, Height: 80m/m

• **ITEM # 828-002 Large**

- Diameter: 115m/m, Height: 100m/m



Autoclaving burs & smaller struments Drainage



Small

Large

WASTE CONTAINER

• **ITEM #814-001 Small**

- Diameter: 56m/m, Height: 47m/m
- Color: Silver

• **ITEM #815-002 Large**

- Diameter: 70m/m, Height: 74m/m
- Color: Gold

Separates into 3 pieces for easy Cleaning. Equipped with locking system.



Small



Large

FLAT TRAY(STERILIZING) TYPE A

• **ITEM #827-001 Blue**



- Sterilizing Tray.
- Ideal for Operator Instruments.
- Anodized Aluminum.
- Dimensions : 200 x 20 x 105m/m (W x H x D)



FLAT TRAY(STERILIZING) TYPE B

• **ITEM #827-002 Red**



- Sterilizing Tray.
- Ideal for Operator Instruments.
- Anodized Aluminum.
- Dimensions : 180 x 10 x 100m/m (W x H x D)



WET-HEAT AUTOCLAVE



ALUMINIUM



STAINLESS STEEL



PLASTIC



SILICONE



GLASS

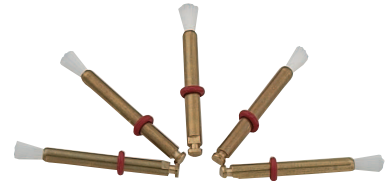
SCALING BRUSH LATCH TYPE

- **ITEM #941-001**
- Packed 72 brushes.
- Regular cup style.
- For polishing of tooth surface after scaling.
- Useful for wide space.
- Diameter: 4.49mm



SCALING POLISHING BRUSH LATCH TYPE

- **ITEM #941-103**
- Packed 36 brushes.
- Small cup style.
- Useful for narrow space.
- Diameter : 2.27mm



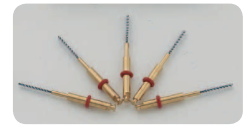
CANDLE BRUSH

- **ITEM #941-104 :**
Latch Type, Packed 24 brushes
- **ITEM #941-105 :**
Screw Type, Packed 24 brushes and 10 mandrels
- For removing stains from occlusal pits and fissures and for preparing tooth surface prior to sealant and orthodontic application.
- Diameter : Latch Type : 4.50mm / Screw Type : 5.00mm



POST BRUSH

- **ITEM #941-100 :**
Mandrels for Screw Type, packed 20 pcs
- **ITEM #941-101 :**
Latch Type, Packed 30 brushes
- **ITEM #941-102 :**
Screw Type, Packed 30 brushes
- For quick cleaning root canal preparation, under bridge.
- Available to insert sterilizing liquid during turn it left in Contra Angle.
- Available to flow out the stains like cement, liquid during turn it right.
- Recommended rotation: 300-800rpm.
- Single use.
- Diameter : Latch Type : 1.20mm / Screw Type : 1.03mm



PROPHY BRUSH

- **ITEM #950-101 :** Latch Type
- **ITEM #950-102 :** Screw Type
- Packed 144 brushes
- Diameter
Latch Type : 4.48mm
Screw Type : 4.48mm



PROPHY BRUSH POINTED HEAD

- **ITEM #950-111 :** Latch Type
- **ITEM #950-112 :** Screw Type
- Packed 144 brushes
- Diameter
Latch Type : 4.48mm
Screw Type : 4.48mm



PROPHY BRUSH LARGE HEAD LATCH TYPE

- **ITEM #950-121**
- Packed 144 brushes
- Diameter : 5.98mm



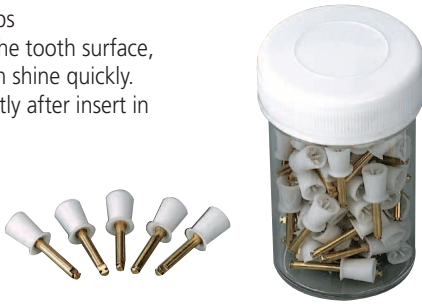
PROPHY BRUSH LARGE POINTED HEAD LATCH TYPE

- **ITEM #950-131**
- Packed 144 brushes
- Diameter : 5.98mm



SILICONE CUP FOR POLISHING LATCH TYPE

- **ITEM #941-002**
- Soft, white cups
- For polishing the tooth surface, achieves a high shine quickly.
- Use conveniently after insert in Contra Angle
- Pkg. of 72



PROPHY RUBBER CUP RIBBED & WEBBED

- **ITEM #950-201** : Latch Type
- **ITEM #950-202** : Screw Type
- Packed 144 cups



Latch Type (RC - 001)



Screw Type (RC - 002)

PROPHY RUBBER CUP WEBBED

- **ITEM #950-211** : Latch Type
- **ITEM #950-212** : Screw Type
- Packed 144 cups



Latch Type (RC - 003)



Screw Type (RC - 004)

PROPHY RUBBER CUP RIBBED

- **ITEM #950-221** : Latch Type
- **ITEM #950-222** : Screw Type
- Packed 144 cups



Latch Type (RC - 005)



Screw Type (RC - 006)

PROPHY RUBBER CUP UMBRELLA SHAPE

- **ITEM #950-231** : Latch Type
- **ITEM #950-232** : Screw Type
- Packed 144 cups



Latch Type (RC - 007)



Screw Type (RC - 008)

PROPHY RUBBER CUP SNAP-ON

- **ITEM #950-251** : Ribbed
- **ITEM #950-252** : Webbed
- Packed 144 cups



Ribbed (RC - 010)



Webbed (RC - 011)

PROPHY RUBBER CUP WEBBED WITH WASHER LATCH TYPE

- **ITEM #950-241**
- Packed 144 cups



(RC - 009)

PROPHY RUBBER CUP SNAP-ON RIBBED & WEBBED

- **ITEM #950-253**
- Packed 144 cups



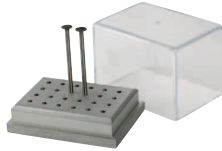
(RC - 012)

BUR BLOCK W/COVER



Type A

- ITEM # 836-001
-
- Holds 24 Friction Grip(high speed) Burs.
- Durable Aluminum with Plastic Cover.
- Remove Plastic Cover before Autoclave.
- Dimensions: 60 x 45 x 44m/m (W x H x D)



Type B

- ITEM # 836-002
-
- Holds 24 Right Angle(low speed) Burs.
- Durable Aluminum with Plastic Cover.
- Remove Plastic Cover before Autoclave.
- Dimensions: 60 x 45 x 44m/m (W x H x D)



Type C

- ITEM # 836-003
-
- Holds 12 Right Angle(low speed) Burs & 12 Friction Grip(high speed) Burs.
- Durable Aluminum with Plastic Cover.
- Remove Plastic Cover before Autoclave.
- Dimensions: 60 x 45 x 44m/m (W x H x D)



Type D

- ITEM # 836-004
-
- Holds 36 Friction Grip(high speed) Burs.
- Durable Aluminum with Plastic Cover.
- Remove Plastic Cover before Autoclave.
- Dimensions: 60 x 45 x 50m/m (W x H x D)



Type E

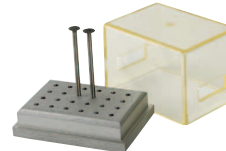
- ITEM # 836-005
-
- Holds 36 Right Angle(low speed) Burs.
- Durable Aluminum with Plastic Cover.
- Remove Plastic Cover before Autoclave.
- Dimensions: 60 x 45 x 50m/m (W x H x D)

STERI BUR BLOCK W/COVER



Type A

- ITEM #837-001
-
- Holds 24 Friction Grip(high speed) Burs.
- Both plastic cover and bur block are Autoclavable.
- Dimensions : 60 x 45 x 44m/m(W x H x D)



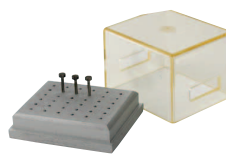
Type B

- ITEM #837-002
-
- Holds 24 Right Angle(low speed) Burs.
- Both plastic cover and bur block are Autoclavable.
- Dimensions : 60 x 45 x 44m/m(W x H x D)



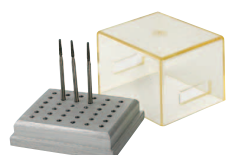
Type C

- ITEM #837-003
-
- Holds 12 Friction Grip(high speed) Burs & 12 Right Angle(low speed) Burs.
- Both plastic cover and bur block are Autoclavable.
- Dimensions : 60 x 45 x 44m/m(W x H x D)



Type D

- ITEM #837-004
-
- Holds 36 Friction Grip(high speed) Burs.
- Both plastic cover and bur block are Autoclavable.
- Dimensions : 60 x 45 x 50m/m(W x H x D)



Type E

- ITEM #837-005
-
- Holds 36 Right Angle(low speed) Burs.
- Both plastic cover and bur block are Autoclavable.
- Dimensions : 60 x 45 x 50m/m(W x H x D)

MINI BUR STAND

Type A



- Silver ITEM #838-101
- Red ITEM #838-103
- Blue ITEM #838-104



- Holds 12 Friction Grip(high speed) Burs
- Durable Aluminum
- Dimensions: 45 x 32 x 25m/m (W x H x D)

Type B



- Silver ITEM #838-201
- Red ITEM #838-203
- Blue ITEM #838-204



- Holds 12 Right Angle(low speed) Burs
- Durable Aluminum
- Dimensions: 45 x 32 x 25m/m (W x H x D)

Type C



- Silver ITEM #838-301
- Red ITEM #838-303
- Blue ITEM #838-304



- Holds 9 Friction Grip(high speed) Burs & 3 Right Angle(low speed) Burs
- Durable Aluminum
- Dimensions: 45 x 32 x 25 m/m (W x H x D)



BUR BLOCK

Type A

- ITEM # 832-001



- Holds 48 Friction Grip (high speed) Burs.
- Durable Aluminum.
- Dimensions: 77 x 7 x 40m/m (W x H x D)



Type B

- ITEM # 832-002



- Holds 48 Right Angle(low speed) Burs.
- Durable Aluminum.
- Dimensions: 77 x 7 x 40m/m (W x H x D)



Type C

- ITEM # 832-003

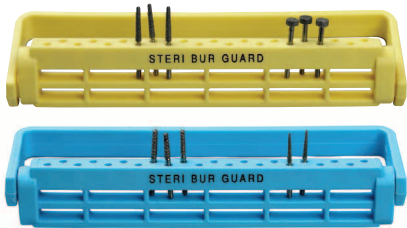


- Holds 24 Friction Grip (high speed) Burs & 24 Right Angle(low speed) Burs.
- Durable Aluminum.
- Dimensions: 77 x 7 x 40m/m (W x H x D)



STERI BUR GUARD(22 HOLE)

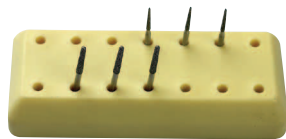
- ITEM #716-103 Yellow
- ITEM #716-106 Blue
- Fits 22 latch & friction grip burs
- Lid does not allow the burs to fall out of the stand.
- Diameter: 75m/m, Height: 35m/m



MAGNETIC BUR BLOCK(OBLONG-14 HOLE)

Type A

- ITEM #717-103 Yellow
- ITEM #717-105 Beige
- ITEM #717-106 Blue
- Dimensions: 77 x 13 x 33m/m (W x H x D)



Type A

Type B

- ITEM #717-203 Yellow
- ITEM #717-205 Beige
- ITEM #717-206 Blue
- Dimensions: 76 x 12 x 37mm (W x H x D)
- 14 Holes
- Fits both FG and RA types.



Type B

GERMICIDE ROUND BUR BOX

ITEM #915-001

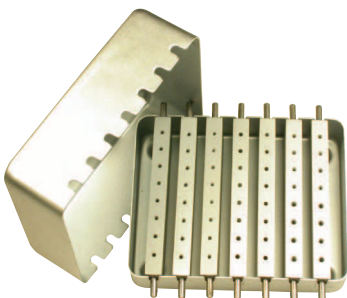


- Contains perforated insert for drainage.
- Practical & Durable.
- 1 Basin bowl/ 1 Perforated insert/ 1 Cover.
- Diameter: 75m/m, Height: 35m/m



AL BOX FOR BUR HOLDER(W/7 INSERTS)

- ITEM # 831-001
- Holds 24 High Speed Burs & 32 Low Speed Burs.
- Interchangeable Inserts. Versatile.
- Easy to transport.
- Dimensions : 125 x 53 x 130m/m (W x H x D)



MAGNETIC BUR BLOCK(SQUARE-8 HOLE)

- ITEM #717-303 Yellow
- ITEM #717-306 Blue
- Fits both FG and RA types.
- Dimensions : 40 x 13 x 40m/m (W x H x D)



MAGNETIC BUR BLOCK(ROUND 24 HOLE)



8 Holes

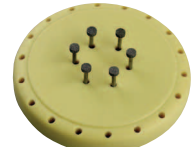
- ITEM #717-503 Yellow
- ITEM #717-505 Beige
- ITEM #717-506 Blue
- Diameter : 43m/m, Height: 10m/m



8 Holes

24 Holes

- ITEM #717-603 Yellow
- ITEM #717-605 Beige
- ITEM #717-606 Blue
- Diameter : 73m/m, Height: 10m/m
- Fits both FG & RA types



24 Holes

BUR STERI BATH

- ITEM # 730-001 White
- ITEM # 730-002 Transparent



- Used for Sterilizing Burs & Small Instruments.
- Removable insert for liquid drainage.
- 1 Basin bowl/ 1 Perforated insert/ 1 Cover.
- Diameter : 88 m/m
- Height : 68 m/m



DOWEL PIN

- ITEM #907-001: Twin pin
- ITEM #907-002: Single pin



Twin pin with metal sleeve & Rubber cap

- Rubber cap saves working time.
- Rubber cap facilitates work.
- Exact fit into preparations and no distortion.
- Pkg.of 1,000



STORAGE TUB(STD. SIZE-S)

- ITEM #719-101 White
 - ITEM #719-103 Yellow
 - ITEM #719-105 Beige
 - ITEM #719-106 Blue
- Portable drawer for storage, organization, and transport of support materials used with procedure tray set-up
 - Dimensions : 323 x 57 x 280 m/m(W x H x D)



STORAGE TUB INSERT(STD. SIZE S)

- ITEM #719-201 White
 - ITEM #719-202 Gray
 - ITEM #719-203 Yellow
 - ITEM #719-205 Beige
 - ITEM #719-206 Blue
- Fits inside Storage Tub(Std. Size S) only, Sturdy 10 compartment design
 - Dimensions : 290 x 28 x 235 m/m(W x H x D)



PROCEDURE TUB

- ITEM #719-301 White
 - ITEM #719-302 Gray
 - ITEM #719-303 Yellow
 - ITEM #719-304 Mauve
 - ITEM #719-305 Beige
 - ITEM #719-306 Blue
- For storage & transportation of procedure materials
 - Dimensions : 310 x 70 x 275 m/m(W x H x D)



MINI FLAT TRAY(SIZE-F)

- ITEM #715-103 Yellow
 - ITEM #715-106 Blue
- Sturdy, non-porous/stain-resistant polypropylene plastic trays
 - Available in flat
 - Dimensions : 243 x 22 x 168m/m(W x H x D)



B-LOCK FLAT TRAY

- ITEM #715-304 Mauve
 - ITEM #715-306 Blue
- Sturdy, non-porous/stain-resistant polypropylene plastic trays
 - Dimensions : 340 x 22 x 245m/m(W x H x D)



FLAT TUB SLIDE TRAY

- ITEM #715-601 White
- For storage & transportation of procedure materials
 - Dimensions : 244 x 28 x 133m/m(W x H x D)



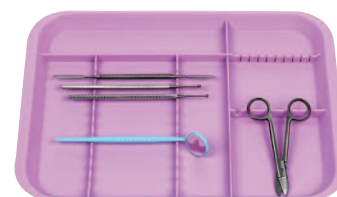
DIVIDED TUB SLIDE TRAY

- ITEM #715-501 White
- Slides on top of dividers
 - Dimensions : 244 x 27 x 134m/m(W x H x D)



B-BLOCK DIVIDED TRAY

- ITEM #715-203 Yellow
 - ITEM #715-204 Mauve
 - ITEM #715-206 Blue
- Sturdy, non-porous/stain-resistant polypropylene plastic trays
 - Dimensions : 338 x 22 x 245m/m(W x H x D)

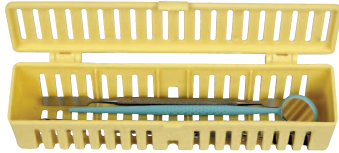


PLASTIC STERI CAGE(TYPE A)

- ITEM #714-103 Yellow
- ITEM #714-106 Blue



- Economical containers for processing procedure set-ups and individual instruments in ultrasonic cleaners and sterilizers
- Dimensions : 205 x 47 x 55m/m(W x H x D)



STERI COMPACT CASSETTE(SIZE A)

- ITEM #718-101 White
- ITEM #718-103 Yellow
- ITEM #718-106 Blue



- Steri-instrument cassette
- Holds 8 hand instruments or 16 when stacked
- Dimensions : 227 x 34 x 128m/m(W x H x D)



STERI SYSTEM CASSETTE(SIZE AA)

- ITEM #718-305 Beige



- Instrument holder included (capacity of 8 instruments)
- Stackable
- Dimensions : 185 x 35 x 140m/m(W x H x D)

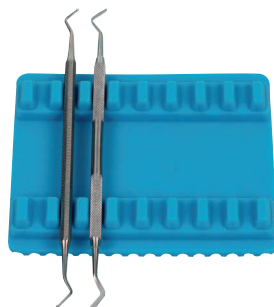


MINI INSTRU. MAT

- ITEM #702-106 Blue



- Holds up to 8 instruments
- Dimensions : 130 x 16 x 103m/m(W x H x D)

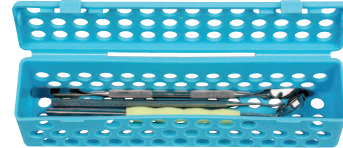


PLASTIC STERI CAGE(TYPE B)

- ITEM #714-203 Yellow
- ITEM #714-206 Blue



- Economical containers for processing procedure set-ups and individual instruments in ultrasonic cleaners and sterilizers
- Dimensions : 205 x 47 x 55m/m(W x H x D)



STERI COMPACT CASSETTE(SIZE B)

- ITEM #718-202 Gray
- ITEM #718-204 Mauve
- ITEM #718-206 Blue



- For processing oversized or bulky items
- Stackable
- Dimensions : 180 x 18 x 99m/m(W x H x D)



STERI SYSTEM CASSETTE(SIZE BB)

- ITEM #718-405 Beige



- Fits standard-size ultrasonic cleaners
- Dimensions : 188 x 70 x 140m/m(W x H x D)

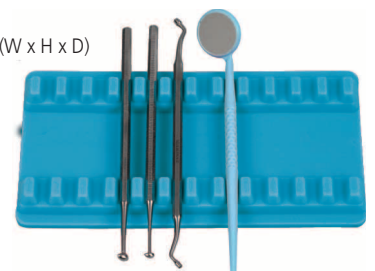


STERI INSTRU. MAT


- ITEM #702-206 Blue



- Holds up to 12 instruments
- Dimensions : 190 x 16 x 100m/m(W x H x D)




DIVIDED TRAY(SIZE B)

- ITEM #715-403 Yellow
 - ITEM #715-404 Mauve
 - ITEM #715-406 Blue
- 
- Sturdy, non-porous/stain-resistant polypropylene plastic trays
 - Available in divided style
 - Dimensions : 338 x 23 x 243m/m(W x H x D)



STAINLESS STEEL TRAY TYPE A

- ITEM #914-001
- 
- A larger Tray for all purposes and storing.
 - Dimensions: 180 x 40 x 135m/m (W x H x D)



STICKY WAX

- ITEM # 940-010 Beige
- Made of superior resins and wax.
 - Used for the temporary joint in the denture repair works.
 - Easy to scrape off the denture after the plaster case is made.
 - Diameter: 7m/m, Height: 80m/m
 - 100g/box



UTILITY WAX

- ITEM # 940-020 White
 - ITEM # 940-021 Red
- Used to build a bank along the tray.
 - Has the superior flexibility
 - Diameter: 5m/m, Height: 315m/m
 - 250g/box



INLAY BLOCK WAX

- ITEM # 940-030 Green
- Used for Inlay casting.
 - Low congelation and contraction, and adequate cohesion and solidity levels make it possible to produce a more precise waxing pattern.
 - Dimensions: 71 x 11 x 78m/m (W x H x D)




MODELING WAX

- ITEM # 940-040 Pink
- Used for the denture works.
 - Provided the sufficient stability for the base plate.
 - The solidity remains equal both in the oral and room temperature.
 - Dimensions: 170 x 1.4 x 100m/m (W x H x D)
 - 500g/box




COMPARTMENT BOX TYPE A

- ITEM #822-001
- 
- Holds 16 basins.
- Small Item Organizer.
- Dimensions: 230 x 25 x 110m/m (W x H x D)




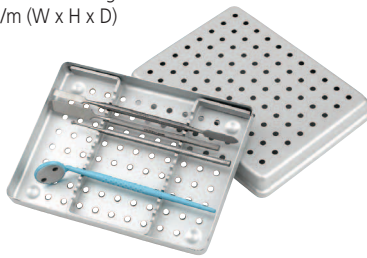
COMPARTMENT BOX TYPE B

- ITEM #822-002
- 
- Holds 12 basins.
- Compartments vary in Size.
- Dimensions: 230 x 25 x 110m/m (W x H x D)




INSTRUMENT TRAY TYPE A (Perforated)

- ITEM #826-001
- 
- Holds 10 Instruments
- Ideal for Instrument Sterilization.
- Perforations Facilitate Sterilization & Drainage.
- Dimensions: 190 x 35 x 150m/m (W x H x D)




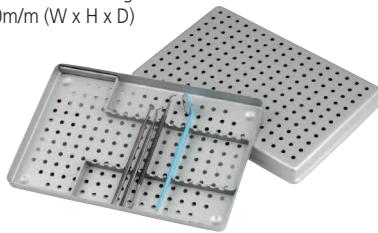
INSTRUMENT TRAY TYPE A (Non-Perforated)

- ITEM #825-001
- 
- Holds 10 Instruments
- Ideal for Instrument Storage.
- Dimensions: 190 x 35 x 150m/m (W x H x D)




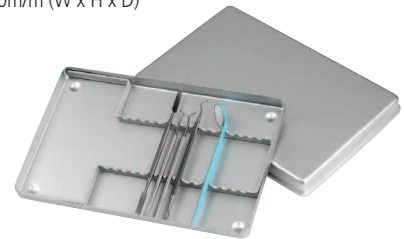
INSTRUMENT TRAY TYPE B (Perforated)

- ITEM #826-002
- 
- Holds 16 Instruments
- Ideal for Instrument Sterilization.
- Perforations Facilitate Sterilization & Drainage.
- Dimensions: 280 x 35 x 180m/m (W x H x D)




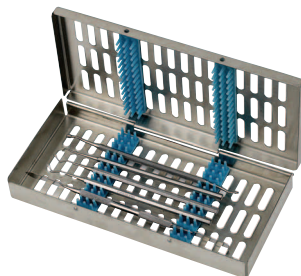
INSTRUMENT TRAY TYPE B (Non-Perforated)

- ITEM #825-002
- 
- Holds 16 Instruments
- Ideal for Instrument Storage.
- Dimensions: 280 x 35 x 180m/m (W x H x D)




INSTRUMENT CASSETTE TYPE A

- ITEM # 913-001
- 
- Holds 14 Instruments.
- Has 4 silicone instrument holding units.
- Easy to open & close.
- Locking system.
- Dimensions: 215 x 25 x 105m/m (W x H x D)



INSTRUMENT CASSETTE TYPE B

- ITEM #913-002
- 
- Holds 20 Instruments.
- Has 4 silicone instrument holding units.
- Easy to open & close.
- Locking system.
- Fits Stainless Steel Rack Type C.
- Dimensions: 185 x 25 x 145m/m (W x H x D)

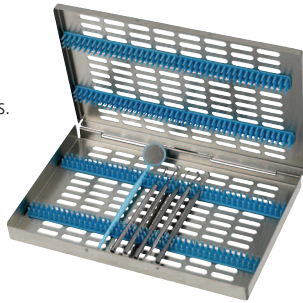


INSTRUMENT CASSETTE TYPE C

ITEM #913-003



- Holds 40 Instruments.
- Has 4 silicone instrument holding units.
- Easy to open & close.
- Locking system.
- Fits Stainless Steel Rack Type D.
- Dimensions: 280 x 25 x 190m/m (W x H x D)



PLASTIC CEMENT SPATULA

ITEM #708-101 White



- High grade plastic that provide a sturdy handle and flexible tip for optimum mixing



CABINET TRAY



- CABINET TRAY # 16
 - Hold 6 Instruments. Durable Plastic.
 - Dimensions: 195 x 20 x 95m/m (W x H x D)
- CABINET TRAY #16A
 - Hold 6 Instruments. Durable Plastic.
 - Dimensions: 195 x 20 x 95m/m (W x H x D)
- CABINET TRAY #17
 - 3 Compartment Plastic Tray.
 - Dimensions: 195 x 20 x 95m/m (W x H x D)
- CABINET TRAY #18
 - 3 Compartment Plastic Tray.
 - Long Lasting and Easy to Clean.
 - Commonly used in the operator.
 - Dimensions: 195 x 20 x 95m/m (W x H x D)
- CABINET TRAY #19
 - Multifunctional Plastic Tray.
 - Dimensions: 195 x 20 x 95m/m (W x H x D)
- CABINET TRAY #20
 - 6 Compartment Plastic Tray.
 - Dimensions: 195 x 20 x 95m/m (W x H x D)



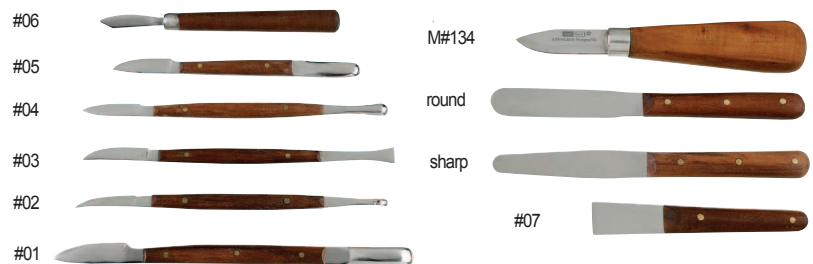
Color	#16	#16A	#17	#18	#19	#20
White	#713-101	#713-201	#713-301	#713-401	#713-501	#713-601
Yellow	#713-102	#713-202	#713-302	#713-402	#713-502	#713-602
Blue	#713-103	#713-203	#713-303	#713-403	#713-503	#713-603
Mauve	#713-104	#713-204	#713-304	#713-404	#713-504	#713-604
Beige	#713-105	#713-205	#713-305	#713-405	#713-505	#713-605
Gray	#713-106	#713-206	#713-306	#713-406	#713-506	#713-606

WAX KNIFE



Jujube wood handle knives

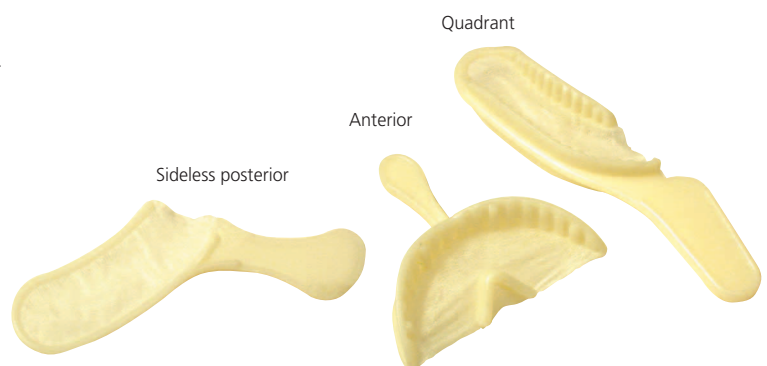
- Item #930-001 Size 1
- Item #930-002 Size 2
- Item #930-003 Size 3
- Item #930-004 Size 4
- Item #930-005 Size 5
- Item #930-006 Size 6
- Item #930-007 Size 7
- Item #930-101 Size Sharp
- Item #930-102 Size Round
- Item #930-103 Size M-type knives #134



TRIPLE BITE IMPRESSION TRAY

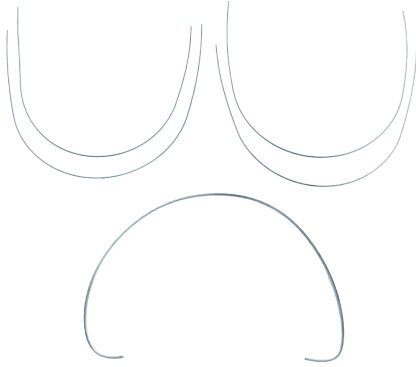
- Beige Color.
- For accurate impressions and bite registrations.
- Thin non-tear mesh designed for extra retention of impression material.
- Rigid plastic frames and ergonomic Handles.
- Designed to minimize distortions.

- Anterior ITEM #720-001 : Pkg. of 35 units
- Quadrant ITEM # 720-003 : Pkg. of 40 units
- Sideless Posterior ITEM #720-004 : Pkg. of 48 units
- Assorted ITEM #720-005 : Pkg. of 40 units



NICKEL TITANIUM ARCH WIRES

- Last up to 5 times more than Stainless steel
- Larger working range than Stainless steel
- Less distortion and more shape memory than Stainless steel
- Easy to arrange in the bracket slots



SUPER ELASTIC ARCH WIRES

- Made of the highest quality Nickel-Titanium wire
- Highly polished ultra smooth finishing
- Allow a high degree of deflection
- Comes in Round (for class 1, mild cases) and Rectangular (for more stiffness and three dimensional control) Wires.

Round Type: Pkg. of 10

NT311-121	.012 Upper	SE-D-12-U
NT311-122	.012 Lower	SE-D-12-L
NT311-141	.014 Upper	SE-D-14-U
NT311-142	.014 Lower	SE-D-14-L
NT311-161	.016 Upper	SE-D-16-U
NT311-162	.016 Lower	SE-D-16-L
NT311-181	.018 Upper	SE-D-18-U
NT311-182	.018 Lower	SE-D-18-L
NT311-201	.020 Upper	SE-D-20-U
NT311-202	.020 Lower	SE-D-20-L

Rectangular Type: Pkg. of 10

NT321-661	.016 x .016 Upper	SE-R-1616-U
NT321-662	.016 x .016 Lower	SE-R-1616-L
NT321-621	.016 x .022 Upper	SE-R-1622-U
NT321-622	.016 x .022 Lower	SE-R-1622-L
NT321-721	.017 x .022 Upper	SE-R-1722-U
NT321-722	.017 x .022 Lower	SE-R-1722-L
NT321-751	.017 x .025 Upper	SE-R-1725-U
NT321-752	.017 x .025 Lower	SE-R-1725-L
NT321-821	.018 x .022 Upper	SE-R-1822-U
NT321-822	.018 x .022 Lower	SE-R-1822-L
NT321-851	.018 x .025 Upper	SE-R-1825-U
NT321-852	.018 x .025 Lower	SE-R-1825-L
NT321-951	.019 x .025 Upper	SE-R-1925-U
NT321-952	.019 x .025 Lower	SE-R-1925-L
NT321-151	.021 x .025 Upper	SE-R-2125-U
NT321-152	.021 x .025 Lower	SE-R-2125-L

REVERSE CURVE

Round Type: Pkg. of 10

NT313-121	.012 Upper	RC-D-12-U
NT313-122	.012 Lower	RC-D-12-L
NT313-141	.014 Upper	RC-D-14-U
NT313-142	.014 Lower	RC-D-14-L
NT313-161	.016 Upper	RC-D-16-U
NT313-162	.016 Lower	RC-D-16-L
NT313-181	.018 Upper	RC-D-18-U
NT313-182	.018 Lower	RC-D-18-L
NT313-201	.020 Upper	RC-D-20-U
NT313-202	.020 Lower	RC-D-20-L

Rectangular Type: Pkg. of 10

NT323-661	.016 x .016 Upper	RC-R-1616-U
NT323-662	.016 x .016 Lower	RC-R-1616-L
NT323-621	.016 x .022 Upper	RC-R-1622-U
NT323-622	.016 x .022 Lower	RC-R-1622-L
NT323-721	.017 x .022 Upper	RC-R-1722-U
NT323-722	.017 x .022 Lower	RC-R-1722-L
NT323-751	.017 x .025 Upper	RC-R-1725-U
NT323-752	.017 x .025 Lower	RC-R-1725-L
NT323-821	.018 x .022 Upper	RC-R-1822-U
NT323-822	.018 x .022 Lower	RC-R-1822-L
NT323-851	.018 x .025 Upper	RC-R-1825-U
NT323-852	.018 x .025 Lower	RC-R-1825-L
NT323-951	.019 x .025 Upper	RC-R-1925-U
NT323-952	.019 x .025 Lower	RC-R-1925-L
NT323-151	.021 x .025 Upper	RC-R-2125-U
NT323-152	.021 x .025 Lower	RC-R-2125-L

SUPER ELASTIC OPEN SPRING

Pkg. of 2

NT331-010	.010	SE-S-10-O
NT331-012	.012	SE-S-12-O

SUPER ELASTIC CLOSE SPRING

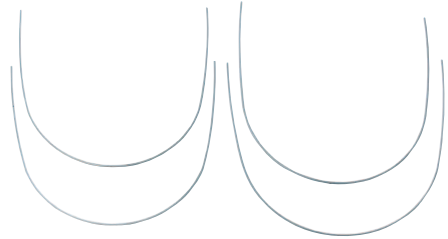
Pkg. of 10

NT332-010	.010	SE-S-10-C
NT332-012	.012	SE-S-12-C

ROUND WIRE

Pkg. of 5

NT341-012	.012	RW-12-5
NT341-014	.014	RW-14-5
NT341-016	.016	RW-16-5
NT341-018	.018	RW-18-5
NT341-020	.020	RW-20-5



THERMAL ACTIVATED ARCH WIRES

- Achieve gentle torque force at the early stage of treatment
- Achieve optimum activation at 37.5°C (Mouth Temperature) and then the force level is increased
- Easy Manipulation

Round Type: Pkg. of 10

NT312-121	.012 Upper	SM-D-12-U
NT312-122	.012 Lower	SM-D-12-L
NT312-141	.014 Upper	SM-D-14-U
NT312-142	.014 Lower	SM-D-14-L
NT312-161	.016 Upper	SM-D-16-U
NT312-162	.016 Lower	SM-D-16-L
NT312-181	.018 Upper	SM-D-18-U
NT312-182	.018 Lower	SM-D-18-L
NT312-201	.020 Upper	SM-D-20-U
NT312-202	.020 Lower	SM-D-20-L

Rectangular Type: Pkg. of 10

NT322-661	.016 x .016 Upper	SM-R-1616-U
NT322-662	.016 x .016 Lower	SM-R-1616-L
NT322-621	.016 x .022 Upper	SM-R-1622-U
NT322-622	.016 x .022 Lower	SM-R-1622-L
NT322-721	.017 x .022 Upper	SM-R-1722-U
NT322-722	.017 x .022 Lower	SM-R-1722-L
NT322-751	.017 x .025 Upper	SM-R-1725-U
NT322-752	.017 x .025 Lower	SM-R-1725-L
NT322-821	.018 x .022 Upper	SM-R-1822-U
NT322-822	.018 x .022 Lower	SM-R-1822-L
NT322-851	.018 x .025 Upper	SM-R-1825-U
NT322-852	.018 x .025 Lower	SM-R-1825-L
NT322-951	.019 x .025 Upper	SM-R-1925-U
NT322-952	.019 x .025 Lower	SM-R-1925-L
NT322-151	.021 x .025 Upper	SM-R-2125-U
NT322-152	.021 x .025 Lower	SM-R-2125-L

GLASS DAPPEN DISHES



- ITEM #601-001 Clear
- ITEM #601-002 Amber
- ITEM #601-003 Blue
- ITEM #601-004 Green



- Standard Dappen Dish.
- Do not Autoclave.
- Easy to clean.
- Sold Individually or Box of 12pcs.

MEDICAMENT BOTTLES

- Locking lids for good sealing capabilities.
- Available in 4 colors for coding of chemicals.
- Easy to use and store.
- High quality glass, economically priced.
- 10ml volume
- Do not Autoclave.



ROUND TYPE

- ITEM #604-001 Clear
- ITEM #604-002 Amber
- ITEM #604-003 Blue
- ITEM #604-004 Green

SQUARE TYPE

- ITEM #605-001 Clear
- ITEM #605-002 Amber
- ITEM #605-003 Blue
- ITEM #605-004 Green



MIXING SLAB



- High quality, competitively priced Mixing Slabs available in 5 sizes.
- Do not Autoclave.



- ITEM #603-005 LT
- Dimensions : 150 x 15 x 80m/m (W x H x D)
- ITEM #603-004 LM
- Dimensions : 150 x 10 x 75m/m (W x H x D)
- ITEM #603-003 M
- Dimensions : 122 x 5 x 75m/m (W x H x D)
- ITEM #603-002 L
- Dimensions : 112 x 6 x 76m/m (W x H x D)
- ITEM #603-001 S
- Dimensions : 76 x 6 x 65m/m (W x H x D)

CHAIR SIDE TABLE

- ITEM #712-001 White



- Comes with attachments.
- Can be adapted to several types of chairs.
- Hole Diameter : available from 25 to 50m/m.
- Easy access to instruments.
- Dimensions : 390 x 30 x 235m/m (W x H x D)



GLASS ENDO ORGANIZER

- ITEM #602-000



- Shallow compartment walls for liquid sterilization.
- 6 inch diameter dish with 12 shallow wall compartments.
- Glass lid with depressions for chemicals.
- Do not Autoclave.



MEDICAMENT BOTTLE STAND

- ITEM #606-001



- Fits 5 Round or Square Medicament Bottles.
- Opaque high quality glass.
- Do not Autoclave.
- Color : Milky White
- Dimensions : 215 x 27 x 55m/m (W x H x D)



BIOHAZARD HANDY HOOPER

- ITEM #704-101 White



- A small plastic waste receptacle for biohazard items
- Can be wall mounted
- Dimensions : 170 x 160 x 100m/m(W x H x D)



TISSUE HOLDER

- ITEM #712-101 White



- Can be adapted to several types of chairs.
- Tissue box holder fits on unit chair pole.
- Hole Diameter : available from 25 to 50m/m.
- Dimensions : 245 x 54 x 125m/m(W x H x D)

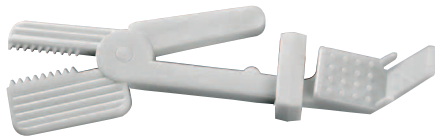


X-RAY FILM HOLDER

ITEM #750-001



- Used for Anterior and Posterior X-Ray.
- Angled for patient comfort in Anterior x-rays.



RETRACTOR (TYPE A)

ITEM #740-001 Adult
ITEM #740-002 Child

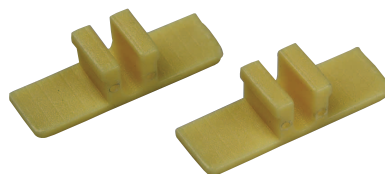


- Soft Flexible Plastic
- Pkg. of 2



COLOR CODE CLIP

ITEM #706-101 White
ITEM #706-102 Gray
ITEM #706-103 Yellow
ITEM #706-104 Mauve
ITEM #706-105 Beige
ITEM #706-106 Blue



- 4pcs in a polybag
- Snap-in clips for trays, tubs and steri system cassettes
- Dimensions : 26 x 8 x 8m/m(W x H x D)

ID-RING

- Silicone rubber
- Standard size(inner diameter 3.6mm)
- Pkg. of 120



- ITEM #942-101 White
- ITEM #942-102 Black
- ITEM #942-103 Brown
- ITEM #942-104 Green
- ITEM #942-105 Orange
- ITEM #942-106 Red
- ITEM #942-107 Gray
- ITEM #942-108 Yellow
- ITEM #942-109 Pink
- ITEM #942-110 Light Brown
- ITEM #942-191 Assorted



CHEEK RETRACTOR (TYPE B)

- ITEM #741-001 Adult
- ITEM #741-002 Child

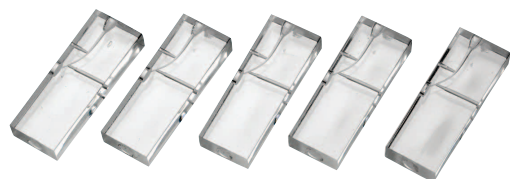


- Soft Flexible Plastic
- Expands the mouth widely
- Pkg. of 2



ENDO TRAINING BLOC

- ITEM #943-100



- Clear acrylic blocs.
- Ideal for training bloc for new techniques.
- Used for .04 tapered NiTi Rotary Files(curved type)
- Pkg. of 10

NEEDLE CAPPER STAND

- ITEM #705-101 White



- One-Handed uncapping
- Syringe is conveniently positioned
- Secured to table top
- Dimensions : 45 x 36 x 31m/m(W x H x D)



COTTON ROLL DISPENSER

- ITEM #770-001 White



- Holds approximately 60 Cotton Rolls.
- Features pull out drawer for easy cotton dispensing.
- Lid flips back for refilling.
- Non-slip bottom.
- Adjustable width for Cotton Roll in 20, 30 and 40m/m.
- Dimensions: 170 x 101 x 52m/m(W x H x D)



AMALGAM WELL



- Non slip Type with Rubber Base

- ITEM #819-001 Type A
 - Diameter: 30m/m, Height 20m/m
- ITEM #819-002 Type B
 - Diameter: 20m/m, Height 27m/m
- ITEM #819-003 Type C
 - Diameter: 20m/m, Height 30m/m
- ITEM #819-004 Type D
 - Diameter: 23m/m, Height 23m/m
- ITEM #819-005 Type E
 - Diameter: 31m/m, Height 23m/m



DISPOSABLE PLASTIC BOWL

- ITEM #707-101 White



- Rigid Mixing Bowls
- Pkg. of 5
- Diameter : 125m/m, Height : 85m/m



MIRACLE SUCTION

Innovative Multifunctional Mirrors with a Suction Function

- These mirrors features suction on the bottom and front sides to free up your handles and save your time.
- A major benefit fewer instruments in the oral cavity.
- Sure Grip autoclavable silicone handles.
- Fits into all suction unit on the dental chair.
- Available Adapters in 11m/m & 16m/m.

ITEM #901-001 Regular Package 11m/m
 ITEM #901-003 Regular Package 16m/m
 Contents: 5 autoclavable mirrors with detachable handle, 2 hoses, 2 adapters, O-rings and cleaning brush.

ITEM #901-002 Small Package 11m/m
 ITEM #901-004 Small Package 16m/m
 Contents: 2 autoclavable mirrors with detachable handle, 1 hose and 1 adapter.



Regular Package



Small Package



www.diadent.co.kr



DiaDent's Network

DiaDent Group International(Korea & International)

No. 626, Yeonje-Ri, Gangoe-Myeon, Cheongwon-Gun, Chungcheong Buk Do, 363-951, South Korea
Tel)82-43-266-2315 Fax)82-43-262-8658
E-mail: diadent@diadent.co.kr

DiaDent Group International Inc. (Canada & USA)

11-3871 North Fraser Way, Burnaby B.C., Canada V5J 5G6
Tel)1-604-451-8851 Fax)1-604-451-8865
E-mail: diadent@diadent.com

DiaDent Europe B.V (Europe)

Antennestraat 70, 1322 AS Almere, the Netherlands
Tel)31-36-549-8607 Fax)31-36-536-7317
E-mail: diadent@diadent europe.com

REP

2013/11/20 [REV. 1]