

- DIA-PROSEAL™ , root canal sealer is an epoxy resin-based formula with outstanding flow characteristics.



Benefits

- The ideal root sealer with Low Shrinkage reduced gapping between the sealer and canal wall.
 - Low solubility makes it resistant to breaking down over time.
 - 1:1 paste to paste manual mixing system.
 - Fast and Easy Preparation and Less Waste.
 - Mixing and handling is very smooth.
 - Excellent flow properties allow it to reach and seal lateral canals, making it especially suited to warm gutta-percha methods.
 - Low risk of cytotoxicity with short setting time.
 - Better biocompatibility for a solution to the sensitivity and periapical inflammation.
 - High radiopacity
- Lightly coated Gutta Percha Points with a good film thickness.

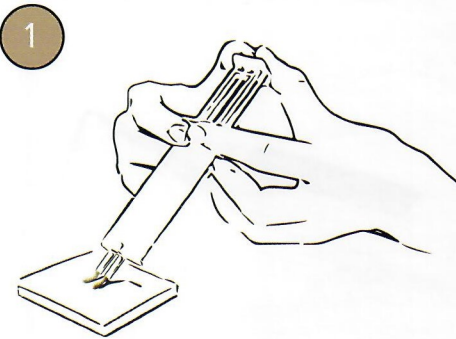
Directions

- Prior to application of DIA-PROSEAL™ , prepare and shape the root canal using endodontic technique.
- Remove all of debris in the root canal. And disinfect and clean the root canal with Sodium Hypochlorite or EDTA solution and dry it.
- Using DIA-PROSEAL™ in dual syringes, press the syringe and squeeze equal volume units of Base material (yellow) and Catalyst material(white) in the ratio of 1:1 on a mixing pad.
- Mix the Base material(yellow) and Catalyst material(white) with a spatula for 10~20 sec to be mixed into a ivory color completely.
- Apply only a light coating of DIA-PROSEAL™ to Gutta Percha Points(silver or titanium root canal points also) and put points into the apex slowly.
- Please check the seal by X-Ray.

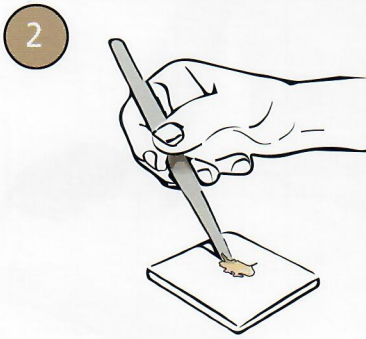
Package

- **ITEM#1003-201**
- 1 Syringe of 16g (Base 6.5g + Catalyst 9.5g)
- 1 Mixing pad
- 1 Spatula

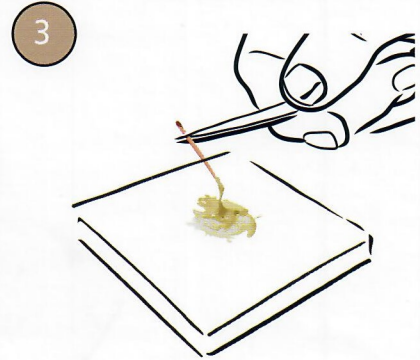
INSTRUCTIONS



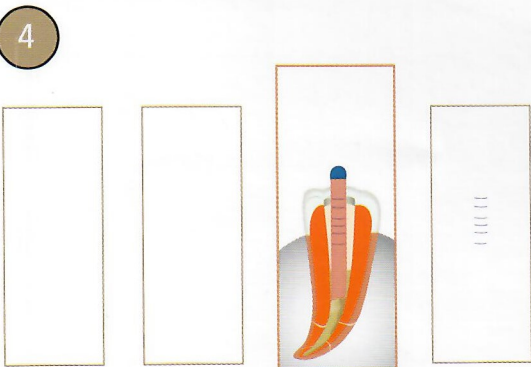
- Press the syringe with two hands to apply Base and Catalyst in 1:1 on the mixing pad



- Mix Base and Catalyst for 10~20 sec with the spatula as 1:1 paste to paste manual mixing system

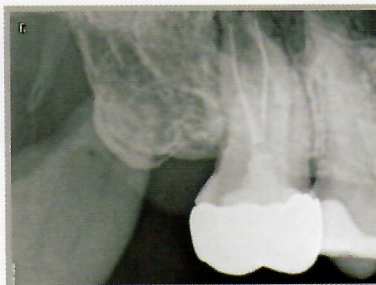


- Coat Gutta Percha Points in the mixed DIA-PROSEAL



- Put Gutta Percha Points into the root canal

RADIOGRAPHS



- High radiopacity with DIA-PROSEAL™