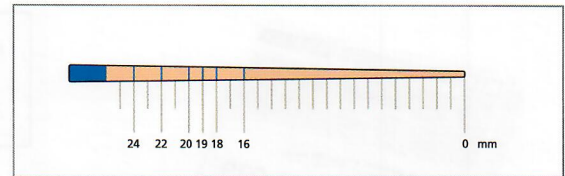


DiaDent's Millimeter Marked Gutta Percha Points & Paper Points

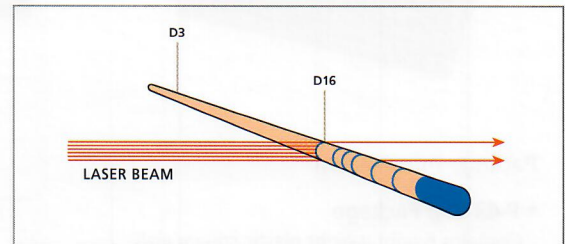
- All DiaDent Points are Hand Jig Rolled to exacting standards.
- They are uniformly tapered and unsurpassed for consistency in sizing.
- All Points are laser inspected to ensure the tightest tolerances surpassing ISO standards.

Millimeter Marked Gutta Percha Points

- Quick and easy method for depth measurements.
- Points with mm marking at 16mm, 18mm, 19mm, 20mm, 22mm and 24mm.
- Eliminates apex perforations which may lead to bleeding.
- Reaches the apex, completely seal the entire length of the canal.
- Save chair time with premeasured points.
- Most accurate depth measurements.



Millimeter Marked

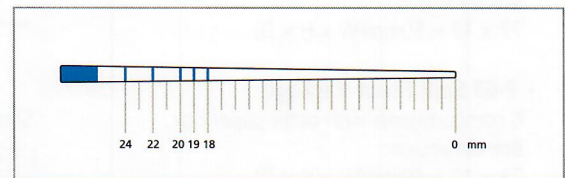


Computerized Laser Inspection System

- Each point is inspected by the laser beam.
- Using a laser beam, each DiaDent ML.029 point is individually inspected for diameters at D3 and D16.
- ISO and ADA standard requires the use of 1/100mm incremental measurement units, DiaDent uses 1/1,000mm increments.

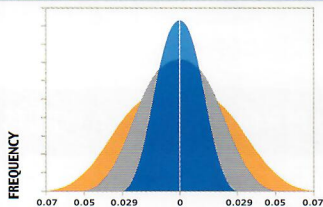
Millimeter Marked Paper Points

- Quick and easy method for depth measurements.
- Points with mm marking at 18mm, 19mm, 20mm, 22mm and 24mm.
- Eliminates apex perforations which may lead to bleeding.
- Completely drying the entire length of the canal.
- Save chair time with premeasured points.
- Most accurate depth measurements.



Millimeter Marked

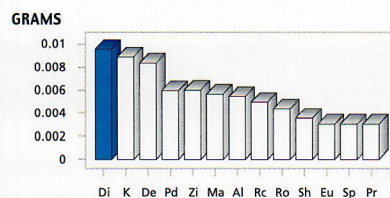
DiaDent Quality Assurance



DEVIATION FROM STANDARD (mm)

■ DIAIDENT ML.029 SPECS
 ■ ISO and ADA SPECS (#10 - #25 sizes)
 ■ ISO and ADA SPECS (#30 - #140 sizes)

Comparative absorption of Paper Points, by Brand



JOSE PUMAROLA-SUNE,
 JOURNAL OF ENDODONTICS, VOL 24, NO.12, 796-798

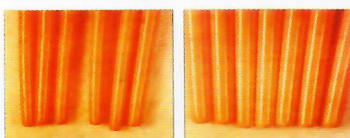
DIADENT PATENTS

- US Patent No. 6,004,133
- International Patents pending.
- European Patents No. 0964656
- United Kingdom Patents No. 0964656
- Deutsches Patents No. EP 0964656

Hand Jig Rolled Points vs Machine Rolled Points

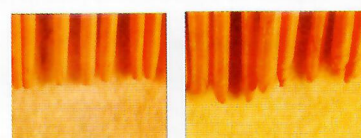
- DiaDent's method of hand rolling the points ensures the following:

DiaDent Hand Jig Rolled Gutta Percha Points



- Consistent, Uniform taper
- Smooth, Rounded Bullet shaped tips
- Readily conforms to shape of canal
- Greater likelihood of optimal apical seal

Machine Rolled Gutta Percha Points



- Inconsistent taper
- Uneven, Unpredictably shaped tips
- Overlapping of material of the tips
- Reduced likelihood of optimal apical seal

ML.029

MILLIMETER MARKED + LASER INSPECTED GUTTA PERCHA POINTS



ML.029

- M - Millimeter Marked
- L - Laser Inspected
- .029 - Diameter Tolerance

Available Sizes

Size	P-63
XF	ML 102-601
FF	ML 102-602
MF	ML 102-603
F	ML 102-604
FM	ML 102-605
M	ML 102-606
ML	ML 102-607
L	ML 102-608
XL	ML 102-609
XFM	ML 102-691

(Pkg. of 100)

Size	P-43	P-63
#8		ML 101-601
#10		ML 101-602
#15	ML 101-403	ML 101-603
#20	ML 101-404	ML 101-604
#25	ML 101-405	ML 101-605
#30	ML 101-406	ML 101-606
#35	ML 101-407	ML 101-607
#40	ML 101-408	ML 101-608
#45	ML 101-409	ML 101-609
#50	ML 101-410	ML 101-610
#55	ML 101-411	ML 101-611
#60	ML 101-412	ML 101-612
#70	ML 101-413	ML 101-613
#80	ML 101-414	ML 101-614
#15/40	ML 101-491	ML 101-691
#45/80	ML 101-492	ML 101-692
#90/140	ML 101-493	ML 101-693

(Pkg. of 120)

Package Information

• P-43 Vial Package

Contains 6 light weight plastic square vials with color coded caps
 Box dimension :
 77 x 17 x 50mm(W x H x D)

• P-63 Spill Proof Package

6 compartments with outer paper box
 Box dimension:
 73 x 17 x 49mm(W x H x D)

Size vs Color Chart

15	45	90	XF	ML
20	50	100	FF	L
25	55	110	MF	XL
30	60	120	F	08
35	70	130	FM	10
40	80	140	M	

DIA-PROISO.04/.06 PLUS

MILLIMETER MARKED + LASER INSPECTED SPECIAL TAPER GUTTA PERCHA POINTS

- Millimeter Marked Special Taper Gutta Percha Points.
- Designed to be used to complement for Profile, Hero & K3 files
- Available in taper .04 & .06

Available Sizes

Size	Dia-Pro Iso .04 Plus	Dia-Pro Iso .06 Plus
	P-63	P-63
#15	ML 158-603	ML 159-603
#20	ML 158-604	ML 159-604
#25	ML 158-605	ML 159-605
#30	ML 158-606	ML 159-606
#35	ML 158-607	ML 159-607
#40	ML 158-608	ML 159-608
#45	ML 158-609	ML 159-609
#50	ML 158-610	ML 159-610
#55	ML 158-611	ML 159-611
#60	ML 158-612	ML 159-612
#70	ML 158-613	ML 159-613
#80	ML 158-614	ML 159-614
#15/40	ML 158-691	ML 159-691
#45/80	ML 158-692	ML 159-692

(Pkg. of 60)



- 6% Dia-Pro Iso .06 Plus
- 4% Dia-Pro Iso .04 Plus
- 2% ML.029 / MMPP

