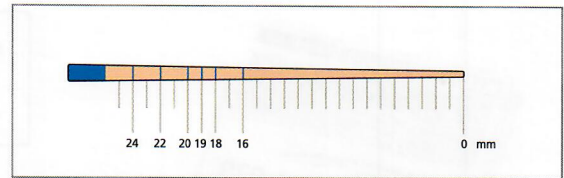


DiaDent's Millimeter Marked Gutta Percha Points & Paper Points

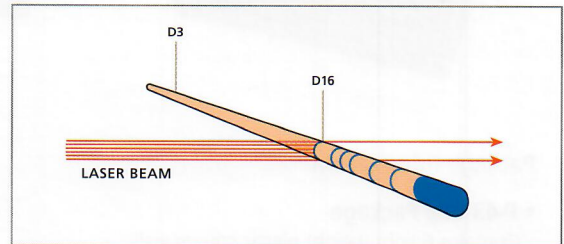
- All DiaDent Points are Hand Jig Rolled to exacting standards.
- They are uniformly tapered and unsurpassed for consistency in sizing.
- All Points are laser inspected to ensure the tightest tolerances surpassing ISO standards.

Millimeter Marked Gutta Percha Points

- Quick and easy method for depth measurements.
- Points with mm marking at 16mm, 18mm, 19mm, 20mm, 22mm and 24mm.
- Eliminates apex perforations which may lead to bleeding.
- Reaches the apex, completely seal the entire length of the canal.
- Save chair time with premeasured points.
- Most accurate depth measurements.



Millimeter Marked

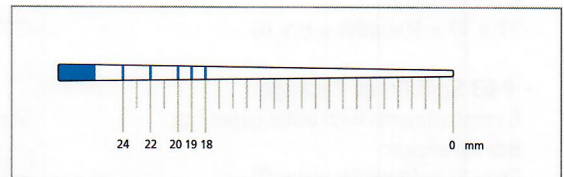


Computerized Laser Inspection System

- Each point is inspected by the laser beam.
- Using a laser beam, each DiaDent ML.029 point is individually inspected for diameters at D3 and D16.
- ISO and ADA standard requires the use of 1/100mm incremental measurement units, DiaDent uses 1/1,000mm increments.

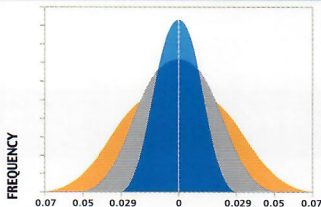
Millimeter Marked Paper Points

- Quick and easy method for depth measurements.
- Points with mm marking at 18mm, 19mm, 20mm, 22mm and 24mm.
- Eliminates apex perforations which may lead to bleeding.
- Completely drying the entire length of the canal.
- Save chair time with premeasured points.
- Most accurate depth measurements.



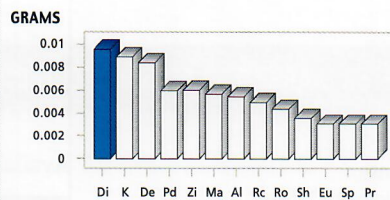
Millimeter Marked

DiaDent Quality Assurance



■ DIAIDENT ML.029 SPECS
 ■ ISO and ADA SPECS (#10 - #25 sizes)
 ■ ISO and ADA SPECS (#30 - #140 sizes)

Comparative absorption of Paper Points, by Brand



JOSE PUMAROLA-SUNE,
 JOURNAL OF ENDODONTICS, VOL 24, NO.12, 796-798

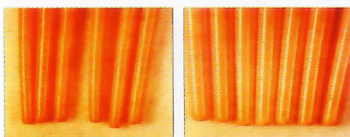
DIADENT PATENTS

- US Patent No. 6,004,133
- International Patents pending.
- European Patents No. 0964656
- United Kingdom Patents No. 0964656
- Deutsches Patents No. EP 0964656

Hand Jig Rolled Points vs Machine Rolled Points

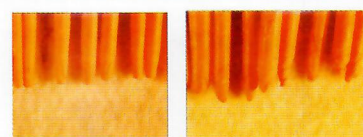
- DiaDent's method of hand rolling the points ensures the following:

DiaDent Hand Jig Rolled Gutta Percha Points



- Consistent, Uniform taper
- Smooth, Rounded Bullet shaped tips
- Readily conforms to shape of canal
- Greater likelihood of optimal apical seal

Machine Rolled Gutta Percha Points



- Inconsistent taper
- Uneven, Unpredictably shaped tips
- Overlapping of material of the tips
- Reduced likelihood of optimal apical seal

MMPP

MILLIMETER MARKED PAPER POINTS



- MMPP is marked to provide preliminary guidance in measuring the root canal depth before proceeding clinically with the application of the Gutta Percha Points.
- These points are highly absorbent and color coded to identify ISO tip sizes.

Available Sizes

Size	P-33	P-63
XXF	MP 202-301	MP 202-601
XF	MP 202-302	MP 202-602
F	MP 202-303	MP 202-603
M	MP 202-304	MP 202-604
C	MP 202-305	MP 202-605
XC	MP 202-306	MP 202-606
XXF/XC	MP 202-391	MP 202-691

(Pkg. of 200)

Size	P-33	P-43	P-63
#8	MP 201-301		MP 201-601
#10	MP 201-302		MP 201-602
#15	MP 201-303	MP 201-403	MP 201-603
#20	MP 201-304	MP 201-404	MP 201-604
#25	MP 201-305	MP 201-405	MP 201-605
#30	MP 201-306	MP 201-406	MP 201-606
#35	MP 201-307	MP 201-407	MP 201-607
#40	MP 201-308	MP 201-408	MP 201-608
#45	MP 201-309	MP 201-409	MP 201-609
#50	MP 201-310	MP 201-410	MP 201-610
#55	MP 201-311	MP 201-411	MP 201-611
#60	MP 201-312	MP 201-412	MP 201-612
#70	MP 201-313	MP 201-413	MP 201-613
#80	MP 201-314	MP 201-414	MP 201-614
#15/40	MP 201-391	MP 201-491	MP 201-691
#45/80	MP 201-392	MP 201-492	MP 201-692
#90/140	MP 201-393	MP 201-493	MP 201-693

Package Information

• P-33 Cell Package

Points remain sterile until opened
Box dimension: 78 x 19 x 50mm(W x H x D)

• P-43 Vial Package

Contains 6 light weight plastic square vials with color coded caps
Box dimension: 77 x 17 x 50mm(W x H x D)

• P-63 Spill Proof Package

6 compartments plastic package
Box dimension: 73 x 17 x 49mm(W x H x D)

Size vs Color Chart

8	10		
15	45	90	XXF
20	50	100	XF
25	55	110	F
30	60	120	M
35	70	130	C
40	80	140	XC

Contents

Size	P-33	P-43	P-63
#08-80	200pcs	200pcs	200pcs
#90-140	200pcs	120pcs	120pcs

DIA-PROISO .04/.06 PLUS

MILLIMETER MARKED SPECIAL TAPER PAPER POINTS

- Millimeter marked Special Taper Absorbency Paper Points.
- Designed to be used for drying and cleaning the canals prepared with **Profile, Hero & K3 files.**
- Available in .04 & .06 taper.

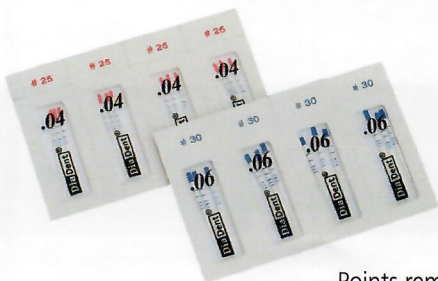


Available Sizes

Size	Dia-Pro Iso .04 Plus	Dia-Pro Iso .06 Plus
	P-63	P-63
#15	MP 258-603	MP 259-603
#20	MP 258-604	MP 259-604
#25	MP 258-605	MP 259-605
#30	MP 258-606	MP 259-606
#35	MP 258-607	MP 259-607
#40	MP 258-608	MP 259-608
#45	MP 258-609	MP 259-609
#50	MP 258-610	MP 259-610
#55	MP 258-611	MP 259-611
#60	MP 258-612	MP 259-612
#70	MP 258-613	MP 259-613
#80	MP 258-614	MP 259-614
#15/40	MP 258-691	MP 259-691
#45/80	MP 258-692	MP 259-692

(Pkg. of 100)

DIA-PROISO .04/.06 PLUS IN THE CELL PACKAGE



Cell pkg	Dia-Pro Iso .04 Plus	Dia-Pro Iso .06 Plus
#15	MP258-703	MP259-703
#20	MP258-704	MP259-704
#25	MP258-705	MP259-705
#30	MP258-706	MP259-706
#35	MP258-707	MP259-707
#40	MP258-708	MP259-708
#15/40	MP258-791	MP259-791

(Pkg. of 120)

- Points remain sterile until opened